



# *CrypKey*

## *Instant. Ver 5.7*

R3.0

Rev. CK0115-INS-04



( )

5 40

3 ( :152-055)

: 855-0611

: 855-0618

Email : [hjnoh@hyubwoo.com](mailto:hjnoh@hyubwoo.com)

URL : <http://www.hyubwoo.com>

: 2001

Copyright© 2001, by HYUBWOO INFO. TECH. CO., LTD. All rights reserved.

가 × . HIT

( , Open) 가

\_\_\_\_\_

\_\_\_\_\_

\_\_\_\_\_

\_\_\_\_\_

가

---

1.	.....	7
1.1	.....	7
1.2	CrypKey Instant ?.....	8
1.3	가.....	9
1.4	.....	9
1.5	.....	10
1.6	Ready-To-Try.....	10
1.7	.....	11
2.	.....	12
2.1	가.....	12
2.2	가.....	17
2.3	.....	18
3.	CrypKey Instant Protection.....	20
3.1	Select Files.....	21
3.2	CrypKey.....	24
3.3	CD Key.....	29
3.4	Message.....	31
3.5	Interface.....	34
3.6	Security Type.....	36
3.7	Casper.....	39
3.8	Configuration.....	42

4.	.....	44
4.1	32 Bit Windows(Windows 95, 98, NT) Program .....	44
4.2	16 Bit Windows(Windows 3.1X) Program .....	45
4.3	DOS Program .....	45
4.4	Win NT/Network Program .....	46
5.	Site Key Generator .....	47
5.1	Configure .....	47
5.2	Level Option .....	51
5.3	CrypKey .....	54
5.4	SiteKey Generator .....	66
5.5	Summary .....	69
6.	. 가 .....	71
6.1	Example.exe .....	71
6.2	SiteKey Generator .....	74
6.3	( ) .....	76
7.	.....	77
7.1	.....	78
7.2	DOS .....	79
7.3	Windows 3.X Win95/98 .....	79
7.4	WindowsNT .....	80
7.5	Novel .....	80
7.6	OS2 .....	80
8.	.....	81
8.1	(CrypKey Instant ).....	81
8.2	(CrypKey Instant ).....	82
8.3	SiteKey Generator .....	83

9. Distributor Authorizing License .....	85
9.1 .....	85
9.2 .....	87
10. CrypKey STEALTH .....	88
10.1 .....	89
10.2 Stealth ( ) .....	92
11. ....	93
11.1 .....	93
11.2 Norton Speed Disk .....	94
12. ....	95
12.1 CrypKey Instant 가? .....	95
12.2 CrypKey가 ? .....	97
12.3 / 가? .....	97
12.4 가? .....	97
12.5 Windows ? .....	97
12.6 Clock 가? .....	97
12.7 CD-ROM 가 가 가? .....	98
12.8 가? .....	98
A .....	99
CrypKey 가? .....	99
.....	101
B .....	108
1. CrypKey Instant .....	108
CrypKey Instant 5.6 5.7 .....	108
CrypKey Instant 5.3 5.6 .....	109
CrypKey Instant 5.0 5.3 .....	112
CrypKey Instant 4.3 5.0 .....	114

2. CrypKey SDK .....				115
CrypKey SDK	5.6	5.7	.....	116
CrypKey SDK	5.5	5.6	.....	117
CrypKey SDK	5.2	5.5	.....	120
CrypKey SDK	5.0	5.2	.....	121
C.....				124
.....				124

# 1.

CrypKey Instant

CrypKey

CrypKey Instant

CrypKey Instant

## 1.1

CrypKey Instant

CrypKey

(SDK)

CrypKey Instant

DLL

Rewrite

CrypKey SDK

Call

CrypKey Instant

CrypKey Instant

가

가

가

- CrypKey Instant ( )
- )
- , Email 가

## 1.2 CrypKey Instant ?

CrypKey Instant 가 30  
 가 , CrypKey Instant

가

가

:

- User Key : D050 815C D1A2 A79D B103
- Master Key : 2A5D 57C4 1B4C 135B F09E 17F7 600B 2D70 79E8 F275 C36A



CrypKey Instant . :

CrypKey CrypKey Instant

4가 . :

- :
- :
- ( ) :
- (CrypKey Instant ) : CrypKey Instant

### 1.3 가

CrypKey Instant , 가 Windows  
가

### 1.4

CrypKey Instant :

- 386( ) , 8MB RAM HDD 1MB
- VGA
- Windows 95/98/2000/XP Windows NT

## 1.5

( )

Email(support@hyubwoo.com)

- 가 .
- 가 .
- .CKN CrypKey

## 1.6 Ready-To-Try

CrypKey Instant 가 가 Ready-To-Try  
가 가 PC 가 가

1.7

가 Ready-To-Try  
(Ready-To-Try  
가 ),  
가( )  
CrypKey Instant 가  
가

CrypKey Instant  
, CrypKey

CrypKey Instant Uninstall  
가 가 Ready-To-Try  
가 가

( 가 )	
가 PC , 30 CrypKey Instant 가	30 가 가 PC PC ( Password )

## 2.

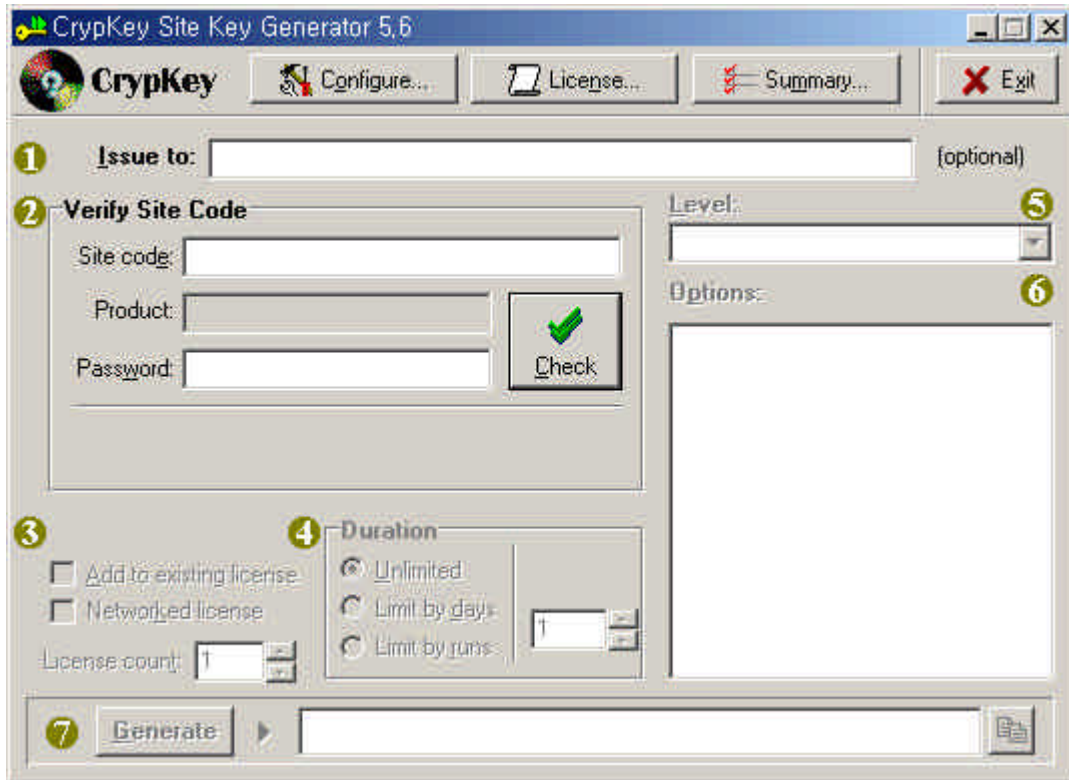
CrypKey Instant 가 30 가  
( , Master Key, User Key )가 . 가 CrypKey Instant  
가 , 3

Protection , , , , .  
.

### 2.1 가

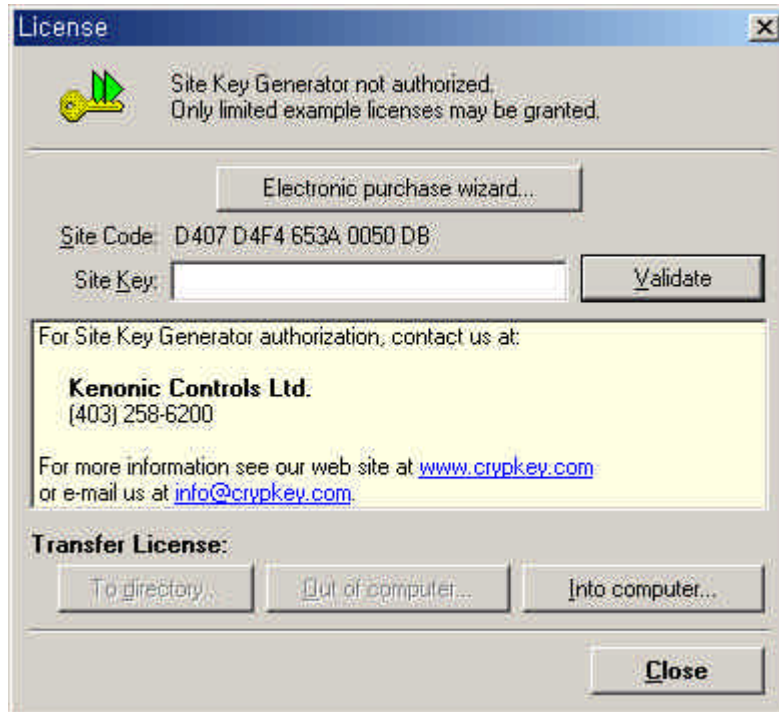
4 ~ 6가 Email, Fax .

- 1) ( : CrypKey Instant V5.X.XXX, Unlimited)
- 2) 가 Customer Service Number( CSN )
- 3) File ( 8.3 / : PROGRAM.EXE, )  
3.2 CrypKey , (%) )
- 4) Password( 12 ) ( )
- 5) SiteKey Generator Site Code : ‘ ’ CrypKey Instant  
VX.X.XXX ‘ SiteKey Generator ’ Double Click  
SiteKey Generator .



License '

License '



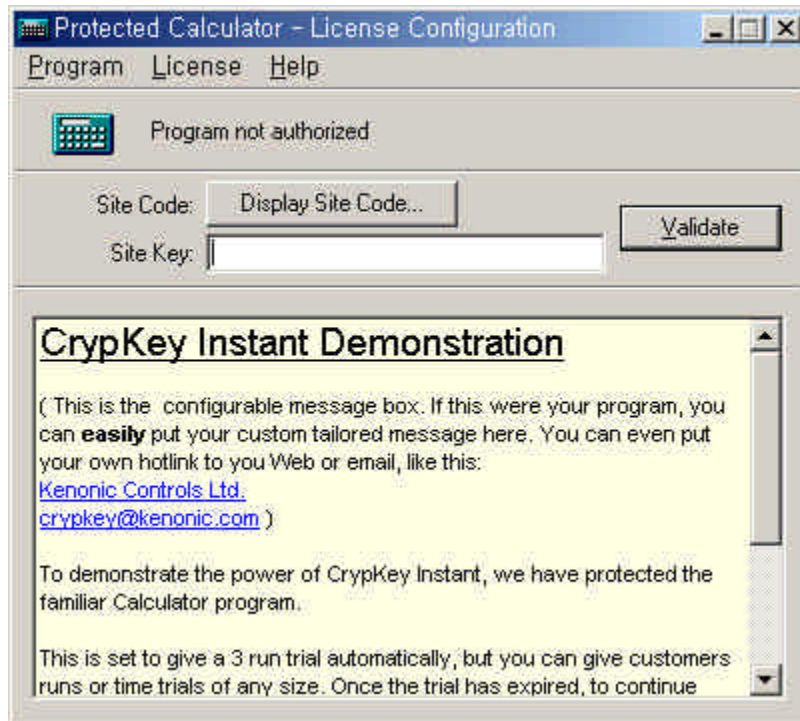
Site Code '

Site Code

Site Key

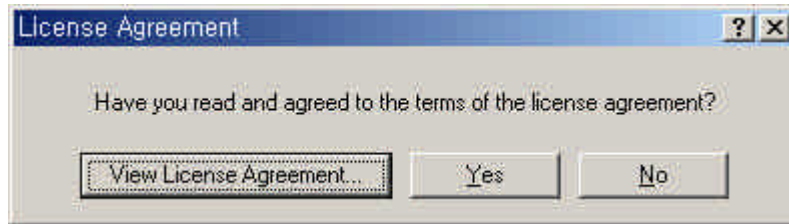
Site Key '

6) CrypKey Instant                      Site Code :  
'                      CrypKey Instant VX.X.XXX '                      CrypKey Instant '                      Double  
Click                      ,                      가                      License  
Configuration '                      ,                      가  
Enter '                      License Configuration '                      ,



Display Site Code ' 가

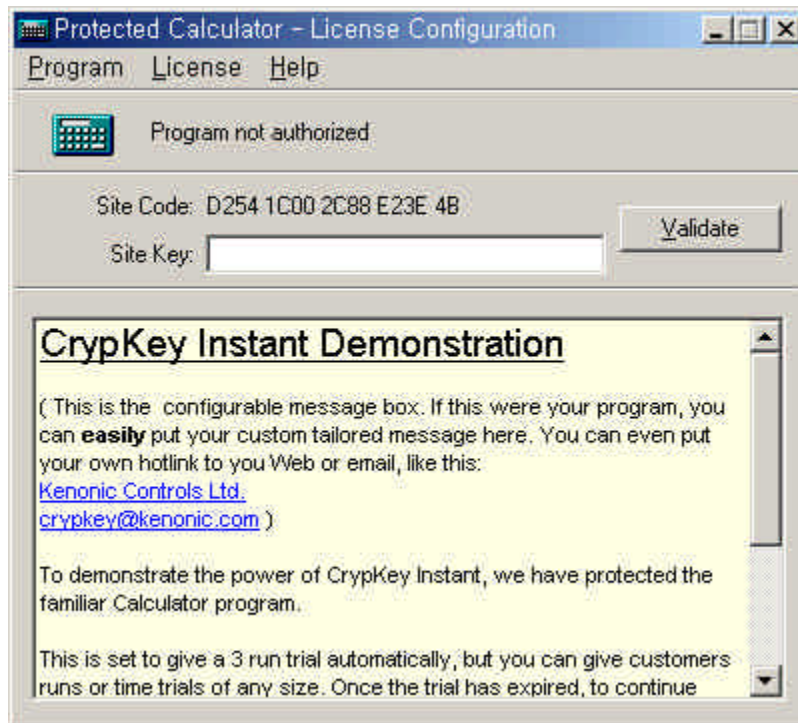
가



Site Code ' View Agreement ' Yes ' 가

View Agreement ' 가

Yes ' 가





Site code 가

Site Key , Site Code Site Key

## 2.2 가

2.1 4 ~ 6가 2 ~ 4  
Email Fax .

- Master Key
- Password User Key
- SiteKey Generator Site Code Site Key
- CrypKey Instant Site Code Site Key

### 2.3

가 2.2 4가 , Master Key User Key  
CrypKey Instant CrypKey ' ( )  
( 3.2 CrypKey ' )

SiteKey Generator Site Key SiteKey Generator License '  
Validate ' ( 2.1 5 ' )

CrypKey Instant Site Key CrypKey Instant License Configuration '  
Validate ' ( 2.1 6 ' )  
)



1) CrypKey Instant 가 ( , ) ,

2) ( , ) , CrypKey Instant PC

3) CrypKey B ' ,  
30 가 가 CrypKey  
가 CrypKey

4) Code 가 Site Code 가 , SiteKey Generator Site  
 Code CrypKey Instant Site Code  
 가 .( Code 18 가 .)

5) CrypKey Instant SiteKey  
 Generator ( , ) SiteKey  
 ' ( CrypKey Instant ) PC 가  
 가 . ,  
 ( , SiteKey Generator/CrypKey Instant  
 PC ) .( , Instant  
 1 PC, SiteKey Generator 3 PC .)

6) CrypKey Instant Limited(Unlimited가 ) ,  
 가

7) CrypKey Instant Limited 가 Unlimited 50% ,  
 가  
 , (Unlimited 가 - Limited  
 가 ) ( 가 X ) X 0.01  
 ( , Unlimited 가 - Limited 가 )  
 Unlimited Version Upgrade . , Limited  
 SiteKey Generator ' Site  
 ' , 가 가

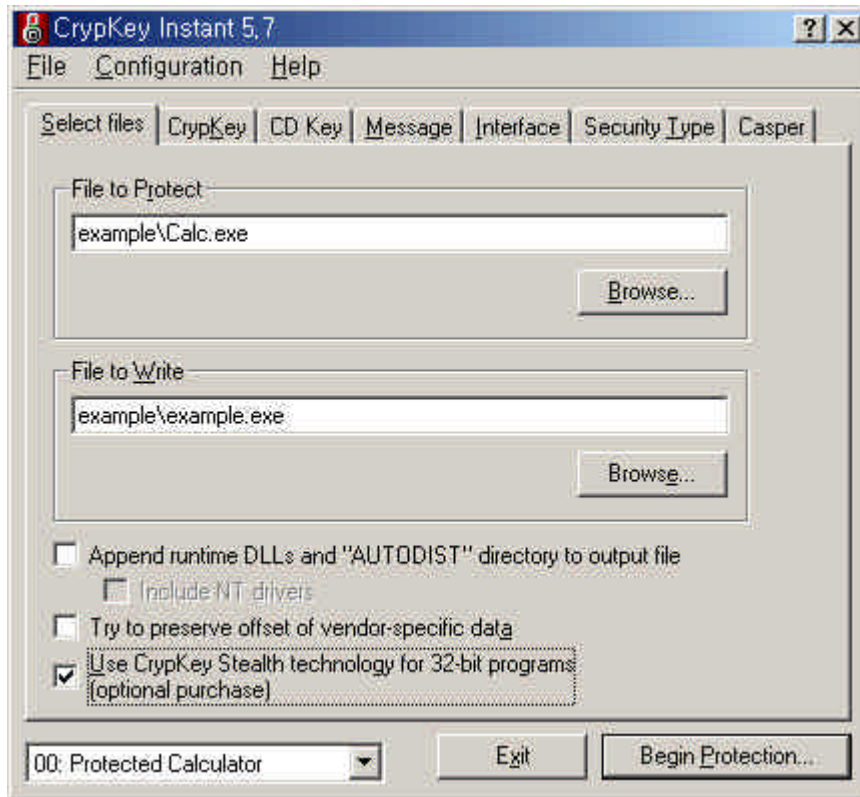
### 3. CrypKey Instant

### Protection

CrypKey Instant HDD( 'C ') 'CKI.2XX' 가 CrypKey

Windows ' ' ' ' ,  
CrypKey Instant VX.X.XXX' 가 CrypKey  
Instant ' Protection , Site  
Key Generator ' CrypKey Instant '  
( )  
CrypKey Instant ' Double Click .  
, 3.1 ' 3.9 ' .

### 3.1 Select Files



File to Protect ' Browse Protection

- File to Protect

CrypKey

Browse ' . (

, C: \ Program

Files \ Your Program \ Your Program.exe/dll).

- File to Write

File to Protect

Browse ' ( , C: \ Program Files \ Your Program \ Your Program.exe/dll).

, File to Protect ' File to Write ' 가

- Append Runtime DLLs and "AUTODIST " Directory to Output File

'Stealth 'CrypKeyWrap ' ( 3.6 Security Type ' 要),

CrypKey Runtime ( 4 ' 要) 가 가 가 가

Windows NT Include NT Drivers ' NT 가

Runtime DLL ( , ) CrypKey DLL

, / , Windows NT ( ) Runtime

Temporary Folder 가

- Try To Preserve Offset Vendor-Specific Data

가 , Protection 가 가

· Use CrypKey Stealth technology for 32 bit programs

가 ) 가 (30 가  
· CrypKey STEALTH  
· 10 CrypKey STEALTH '



1) 가 File to Write ' Example.exe '

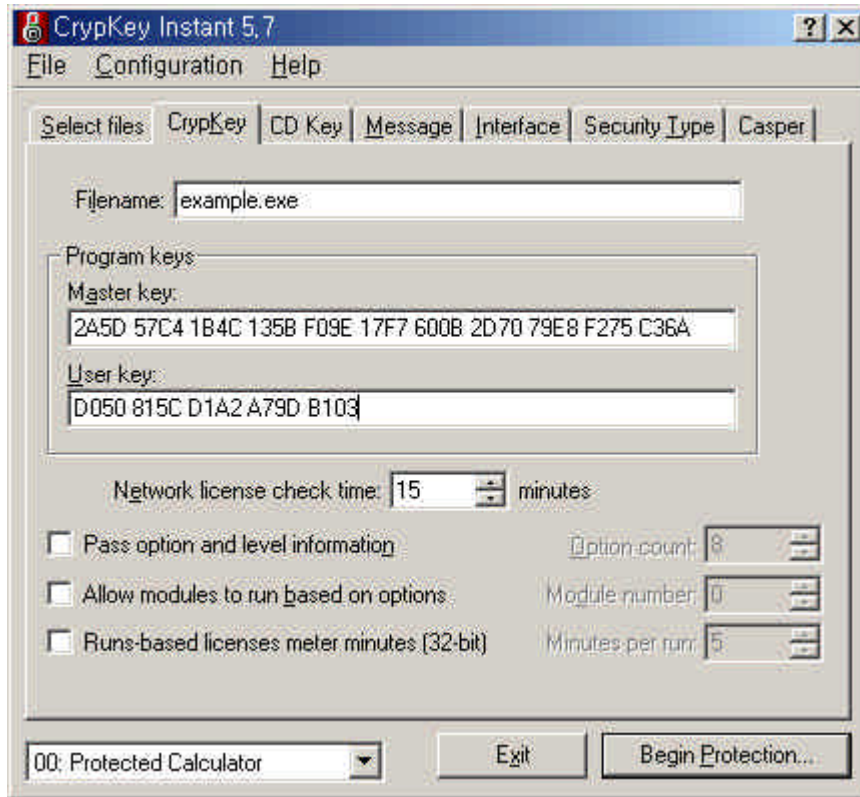
2) Configuration ' 00:Protected Calculator ' Protection  
(Calc.exe)

Protection , 01:(empty) '  
File to Protect ; File to Wirte '  
, 00

· Site Key Generator '

3) 가 가  
, Append Runtime DLLs and AUTODIST Directory to Output File '

### 3.2 CrypKey



- Filename

```
(XXXXXX.exe/dll )
File to Wirte '
% CRYPKEY ( ,
)
```



, CrypKey COMMONFILES PROGRAMFILES  
 , %COMMONFILES% \ MYDIR \ example.exe '  
 , PC Program Files ' Common  
 Files ' MYDIR ' 가 CrypKey

- Master Key User Key

- 00 : Protected Calculator ' , 가 .

- 01 : (empty) ' ,

Master Key User Key 00 : Protected Calculator ' ,

- Network License Check Time

Floating/Network , 가 Client

- Pass Option and Level Information

5.2 Level Option ' Option Level  
 Option Count ' Option Level

- Runs -based licenses meter minutes (32-bit)

5.7 가 , .EXE  
 (分)  
 (分)  
 (分)

- Allow Modules to Execute Based on Enabled Options

( ) /  
/  
No 3 , SiteKey Generator(5 要)  
Option Number 3 , No.3  
5.3 .

Protect

---

1) PC

2) CD-ROM

1), 2)

•

CrypKey

, DATA.LIC. '

CrypKey Instant

,

Master Key

,

Master Key '

,

CrypKey Instant

LICENSE\_PATH '

File Name '

% '

%LICENSE\_PATH '

•

PC

PC

가

X: \ Programs \ My Program '  
AUTOEXEC.BAT ' :

Set LICENSE\_PATH = X: \ Programs \ My Program \ data.lic '

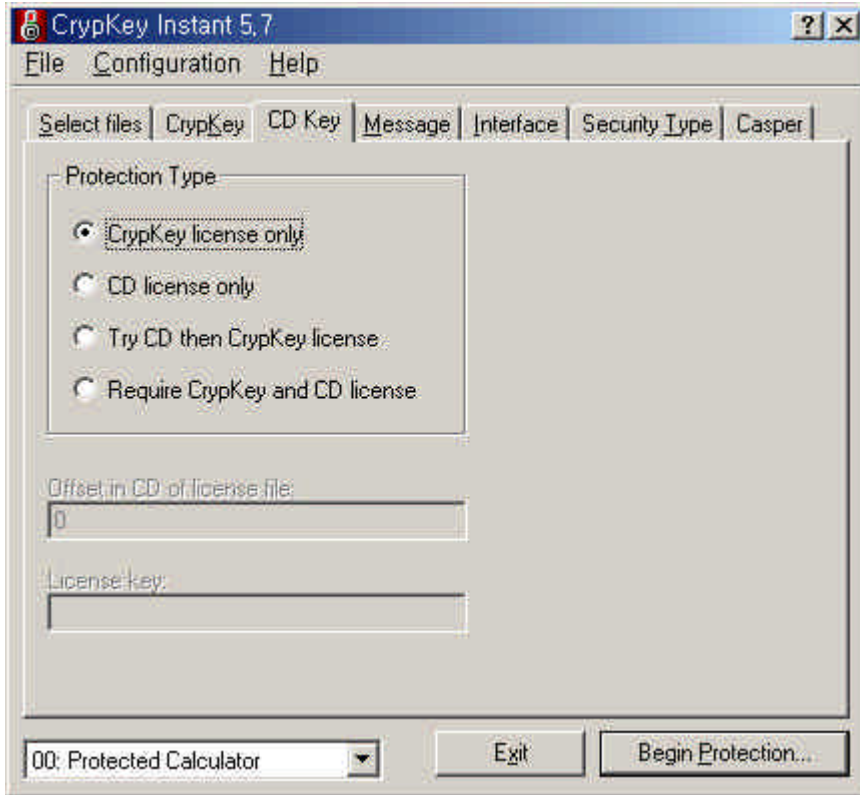
Reboot



1) 가 File Name ' example.exe '  
Select Files ' File to Write ' example.exe '  
가 File Name ' example.exe 가

2) 가 Stealth

### 3.3 CD Key



가 CrypKey CD Key  
, CD Key

4가

• CrypKey

• CD Key

• CD Key

가

, CrypKey

• CrypKey

CD Key

가

가

, CrypKey

가

CD

CD가

CrypKey

CD

가

CD

가.

CrypKey

가

( , Windows

HDD

Reformatting/

),

가

PC

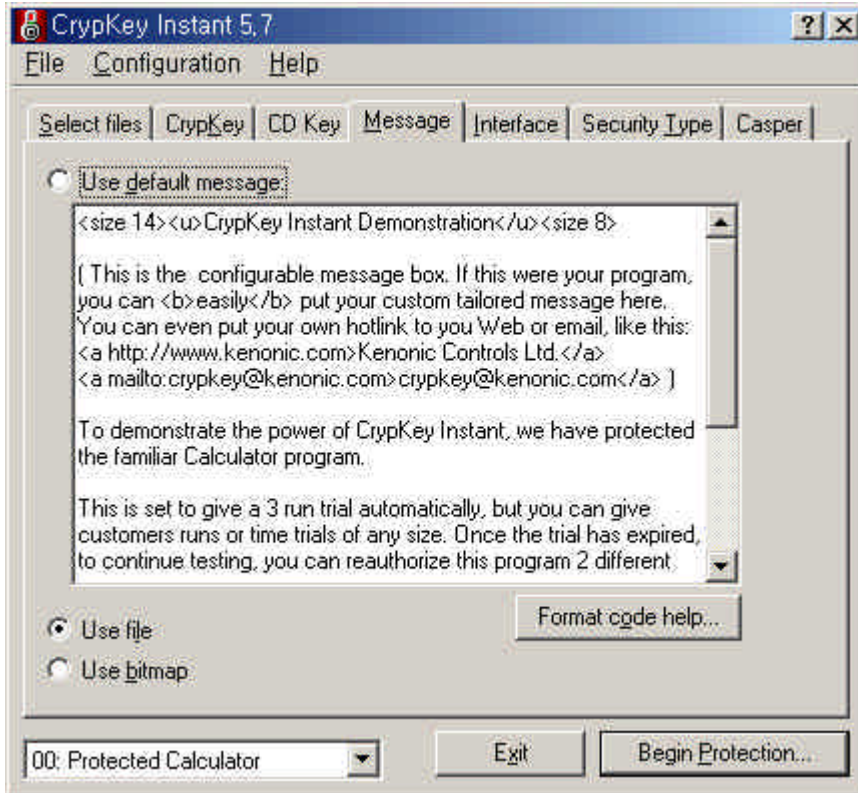
PC

CrypKey

Transfer

CD

### 3.4 Message



CrypKey Instant

. 가

가

가

- Use Default Message

1,024

<regular>	: 8-point Arial
<b>, <\ b>	On/Off
<i>, <\ i>	On/Off
<u>, <\ u>	On/Off
<font fontname>	, , <\ font>
<size fontsize>	
<a webaddress> <\ a>	, 가 가 가 .



## Email

, <a mailto : support@hyubwoo.com> Mail us< \ a>

:

<font Times New Roman> <size 9> Regular text,

<b> bold text < \ b>, <i> italic text < \ i>,

<a http : //www.hyubwoo.com> link to Hyubwoo Info Tech 's web page < \ a>.

( ) :

Regular text, bold text, italic text, link to hyubwoo Info Tech 's web page

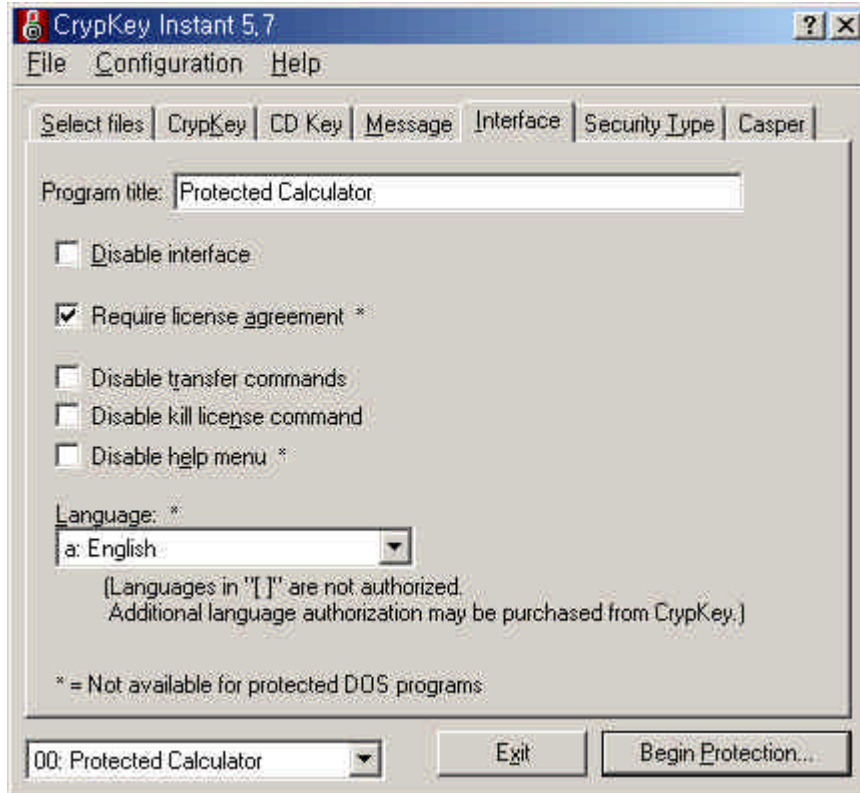
### • Use Text File

가 , 가 1024  
bki\_?.msg ( ? ' A ' )

### • Use Bitmap File

Bitmap , 16 Bitmap  
가 ,  
bki\_?.bmp ' .

### 3.5 Interface



Program Title ' .

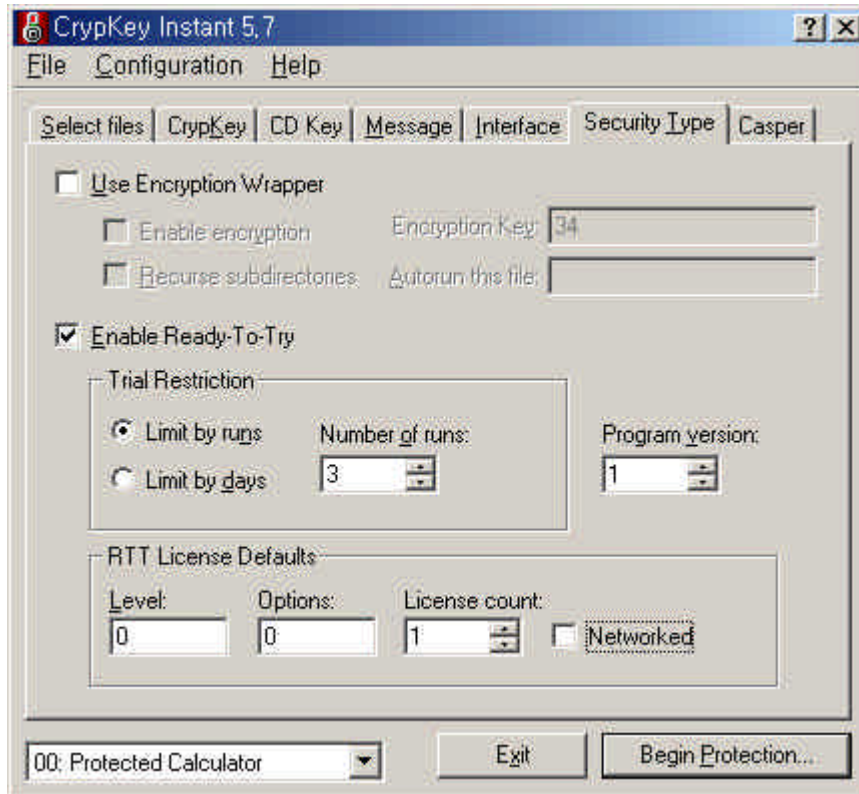
On/Off가 가 .

- Disable Interface

CrypKey Instant ( , EXE  
가 DLL ) .

- Require License Agreement  
가 Site Code ( 2.1 6 ' )
- Disable Transfer Commands  
가 PC
- Disable Kill License Command  
Kill License
- Disable Help Menu  
Help
- Languages

### 3.6 Security Type



- Encryption Wrapper  
CrypKey Instant

### “3.1 Select Files ”

- Encryption Key : 0 ~ 2^32 가 , 가  
( ) 5 ' Site  
Key Generator , Level '  
Site Key( Email  
가 ) .( ,  
Option ' 0 ' 要)
- Rescure subdirectories :
- Autorun this file :

- Ready-To-Try

가 가 , 가  
가 가 /  
가 가  
(CrypKey Instant 가  
).

- Trial Restriction : (Runs) (Days)
- RTT License Default : 가 가 Level  
Option . , Level '  
, Options '  
/

( ON/OFF) 가  
 , 가 Option 1,  
 2 5  
 '10011' ( Option 1 Low-bit, Option 2  
 bit )  
 $1 \times 1 + 1 \times 2 + 0 \times 4 + 0 \times 8 + 1 \times 16 = 19$  Option  
 . Option 1 ~ 32 가 .  
 , Level Option Site  
 Key Generator

- Program Version : 가

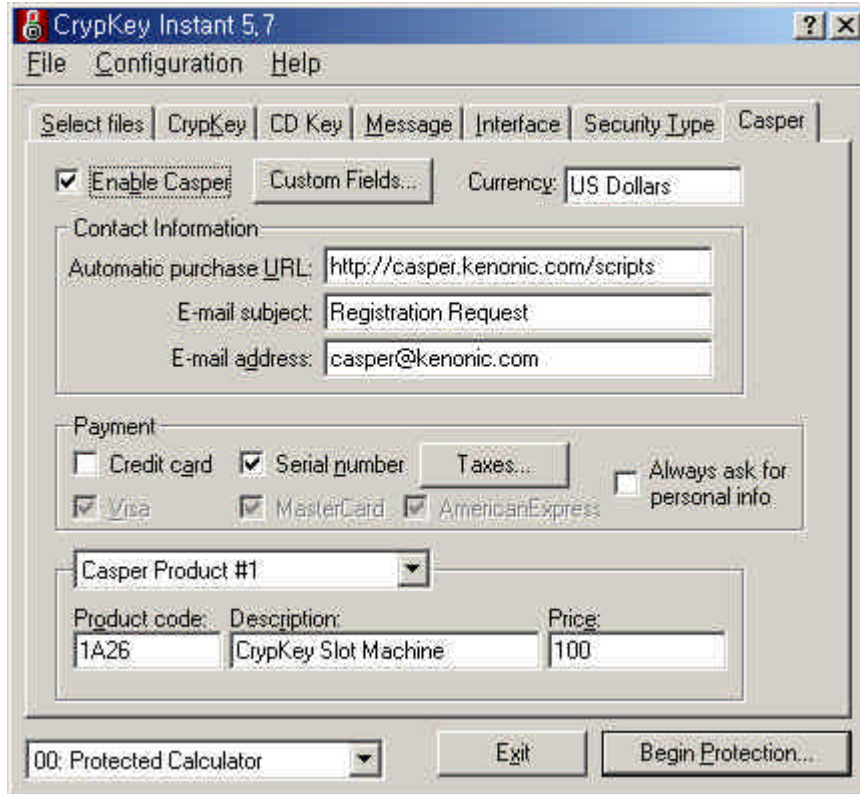
32 가



1) 'Ready-To-Try' 가 PC .

2) 가 Site Key Generator  
 3 , 3 .

### 3.7 Casper



Casper  
, CrypKey Instant  
Casper

CrypKey Instant가

Casper CrypKey Instant, Casper Server  
가 .

1)

Casper Server 가

2)

Email

Casper Server Email Email Email

3)

Email

Email

Email

Email

Casper  
가

(Casper Credit Card)

• : 가 , 가

• : 가 , Serial Number  
S/N가 Casper Server  
가 .



## Casper

- Casper , Enable Casper ' , Currency ' 가 .
- “ ” , URL
- ‘Email ’ , Casper Server가
- ‘URL ’ ‘Email ’ , Casper ‘ ’ , 가 가 Email ’
- ‘Payment Type ’ Casper Server가 , S/N S/N , 가 S/N . Casper Wizard 16 Casper
- Product Number/Code Product Description .



- 1) Casper CrypKey Instant V5.1 가 .
- 2) Casper (32 bit Windows ) Casper DLL .

### 3.8 Configuration

CrypKey Instant 100 ( 00-99)

Configuration

Interface

Drop-Down List

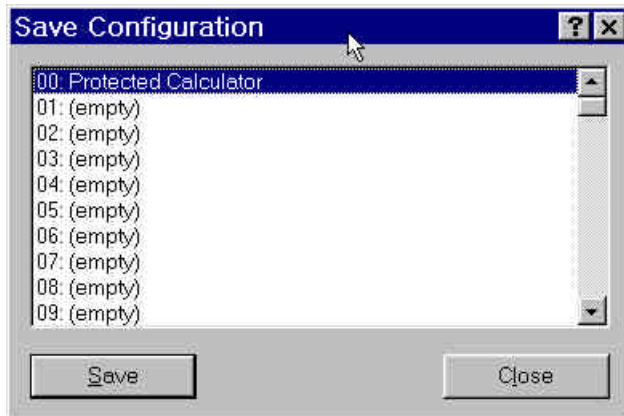
03 '.....)

Configuration( 01 ' 02 '

Select File ' (3-1 ) ~ Casper ' (3-6 )

Configuration '

Save Configuration '



, Save Configuration '  
가? ', NO '  
Configuration Number

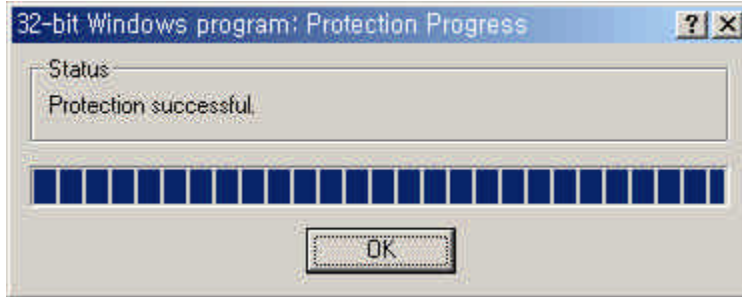
' Configuration Overwrite  
Save Congifuration As '

### 3.9 Begin Protection

Protection

Begin Protection

가



# 4.

가 3.1 3.6

.DLL

5.6

.EXE

CrypKey가

## 4.1 32 Bit Windows(Windows 95, 98, NT) Program

Cki32?.dll	32-bit Windows DLL( 32 bit )
Cryp95?.dll	32-bit CrypKey DLL(Windows95 98 )
Crp9516?.dll	32-bit CrypKey thunk DLL(Windows95 98 )
Cki32?_?.dll	32-bit Windows resource file( 가 )
Cki_?.msg	Text file message( Use File for the message ' )
Cki_?.bmp	Bitmap message( Use Bitmap for the message ' )
Cklicens.hlp	License file( Require License ' )
Casper.dll	Casper
Splash.int	Splash Windows

## 4.2 16 Bit Windows(Windows 3.1X) Program

Cki16?.dll	16-bit Windows English DLL( )
Cki16??.dll	16-bit Windows resource DLL( ) 가
Cki_?.msg	Text file message( Use File for the message ' )
Cki_?.bmp	Bitmap message( Use Bitmap for the message ' )
Cklicens.hlp	License file( Require License ' )
Cknetwk.exe	Network supported(Floating Licenses )
Splash.int	Splash Windows

## 4.3 DOS Program

DOS , ,  
 Programname.exe, Programname.ex^,  
 Programname.ex\_ '

#### 4.4 Win NT/Network Program

WindowsNT Host Computer CrypKey Network Driver  
. SETUP.EXE ' Call

Destination Install Directory 가 .

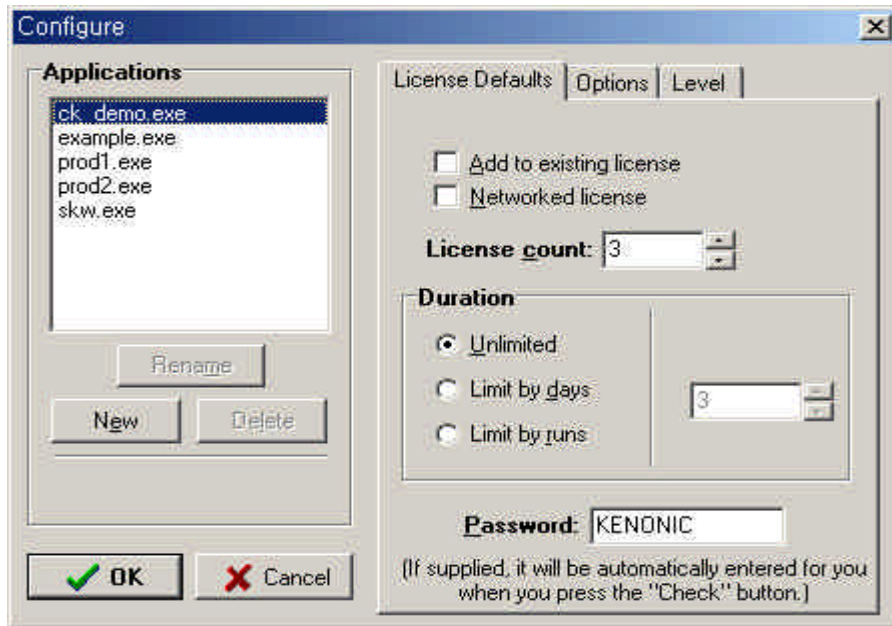
SETUP.EXE C: \ CRYPTDEMO '

CrypKey가 5.6 NT

7 ' .

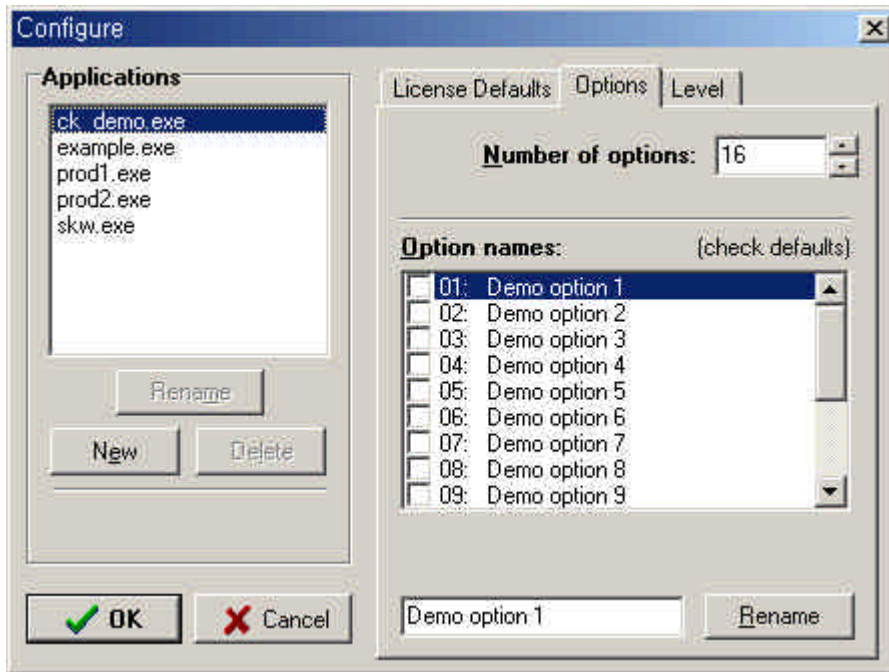


New ' , New Application ' ( ,  
 example.exe) OK ' , Rename '  
 Delete ' Application '  
 ID ' ( ,  
 1 ' .  
 Configure ' License Defaults '  
 , License Count '  
 ( PC) ,  
 Fixed ' Password ' 가  
 ( 12 ) .

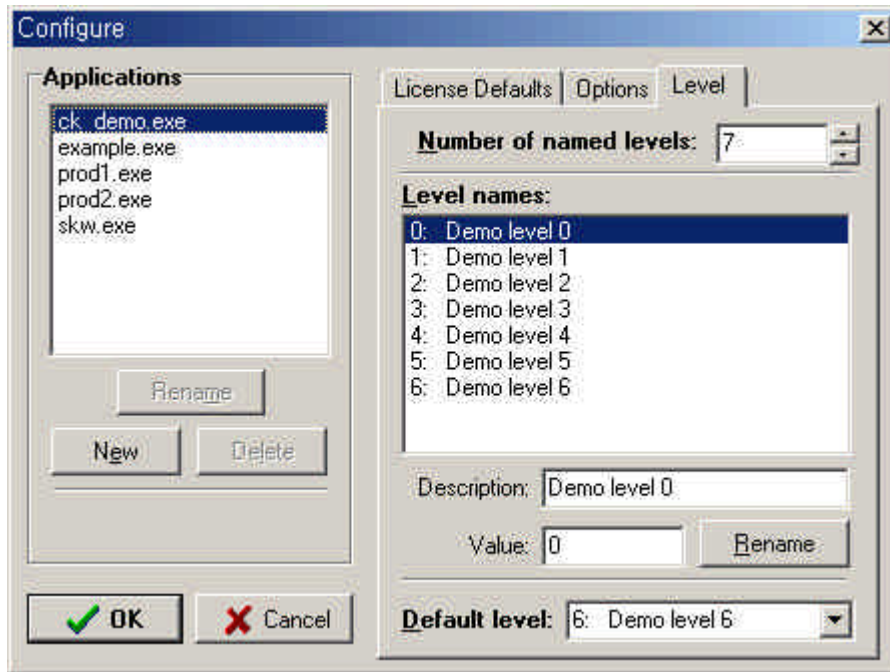




, 가 KENONIC ' .  
Configure ' Options ' , 5.2 '  
Number of Options ' Option names ' Default  
Option .



Configure ' , Level ' , 5.2 '  
Number of Levels ' Level names ' , Default Level



## 5.2 Level Option

CrypKey Instant Level Option , 가 , Level Option  
 32 bit , 28 Option  
 4 bit Level .

### · Levels

Level , 가  
 / / .  
 - Level 0 : ( )  
 - Level 1 : + ( )  
 - Level 2 : + + ( )  
 , Level Level 가 .

### · Options

Option , Level  
 가 ( On Off) ,  
 Option On/Off 1 .  
 - Option 1( On) : 가  
 - Option 0( Off) : 가  
 , Option Option  
 ( On) .

Level Option  
 가  
 Level Option Site Key Generator Congifure ' 가  
 Level Option 가  
 . :  
 Level Option 가?  
 Site Code  
 Level Option ,  
 SiteKey Generator  
 SiteKey Generator Site Key  
 Level Option  
 Site Key  
 Level Option

Level Option .

, Level Option Level Option .

Level Option Option 5가 On 가 ,

CrypKey Instant Level Option .

CrypKey Instant CrypKey ' ( 3.2 ' ), Pass  
Option and Level Informatin ' Options count '

SiteKey Generator Configure ' Level Option .

, Level Option 가 ' Test

### 5.3 CrypKey

CrypKey

(Module)

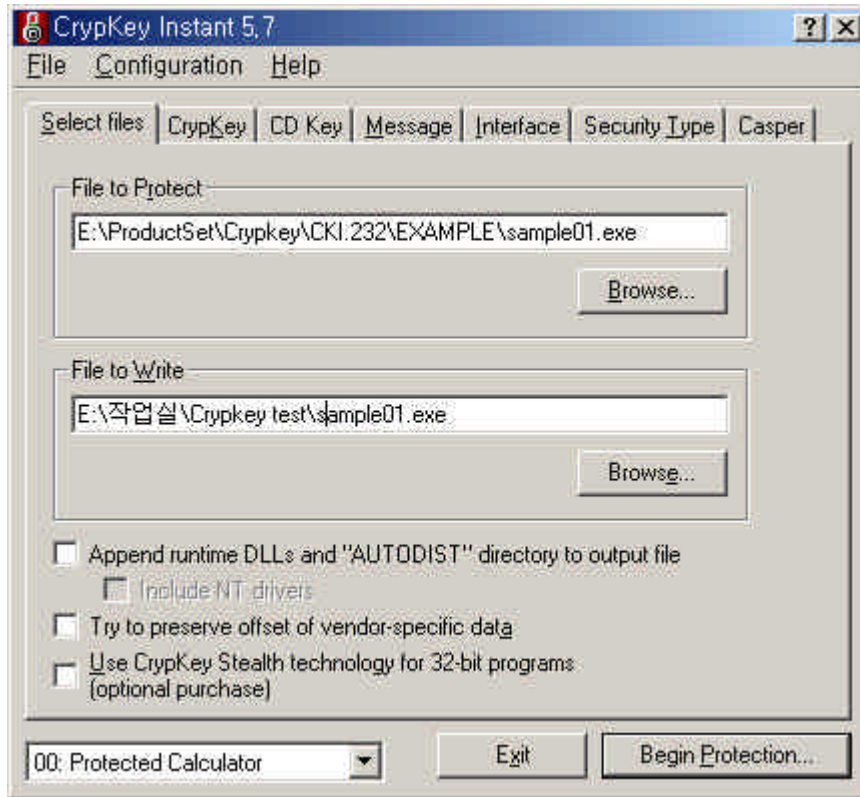
가

Sample01, Sample02... Sample05 5가 가

, 가 30 가  
Filename Example.exe

.( 6 .)

, CrypKey ' Select File '



- File to Protect  
Sample01.exe
- File to Write  
Sample01.exe (File to Protect )





- Pass option and level information

Count

3.2

Option

Option

- Allow modules to run based on options

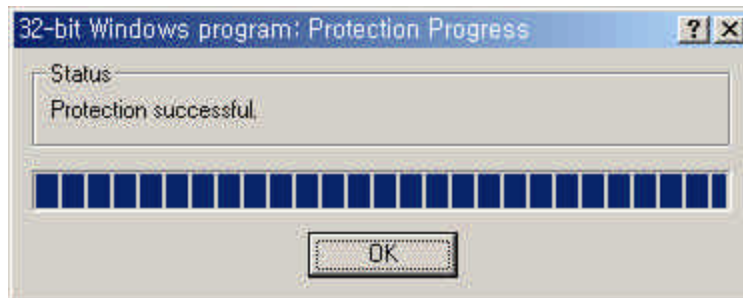
Option

Site Key Generator  
Module 가  
Sample01.exe

1 ’

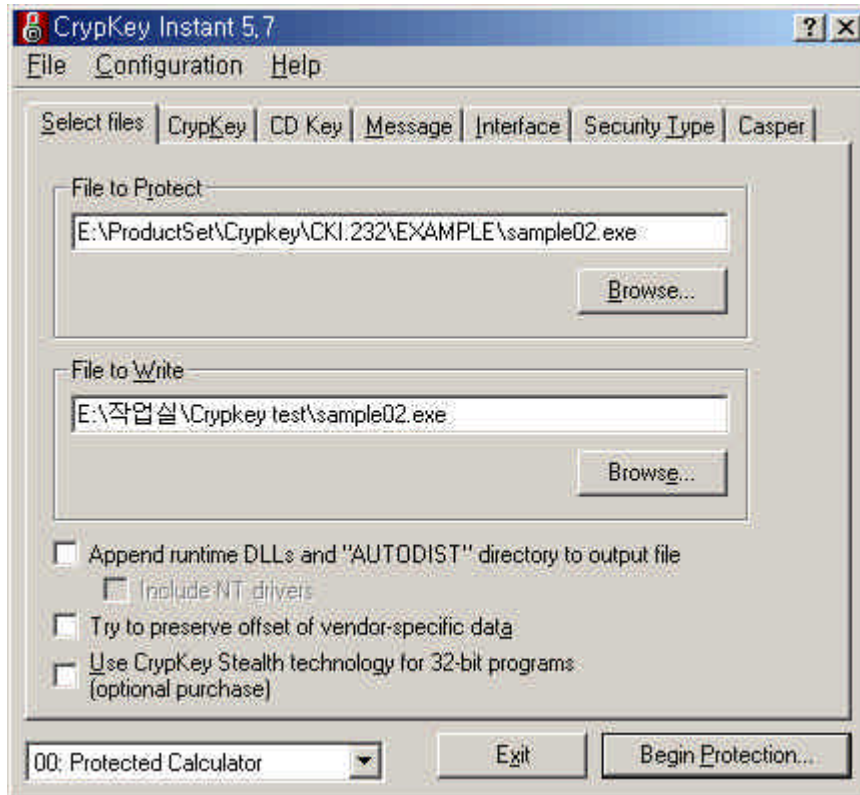
CDKey, Message, Interface, Security Type, Casper

, ‘Begin protection.. ’



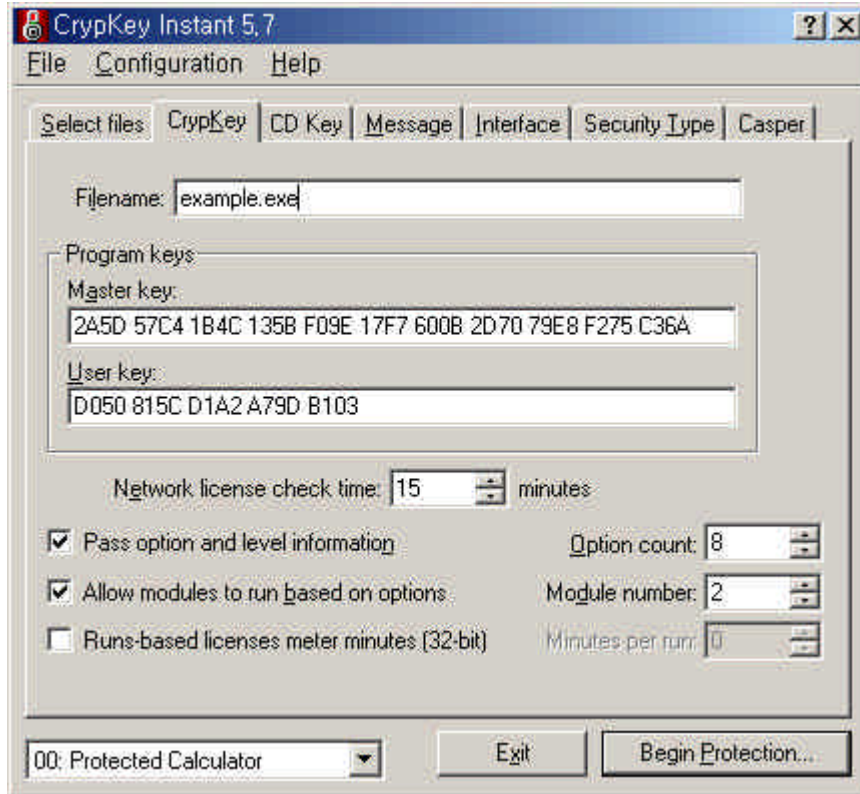
Sample02.exe

Sample01.exe



- File to Protect  
Sample02.exe
- File to Write  
Sample02.exe (File to Protect )

## CrypKey



- Filename

sample01.exe

sample02.exe

Filename ' sample02.exe

가

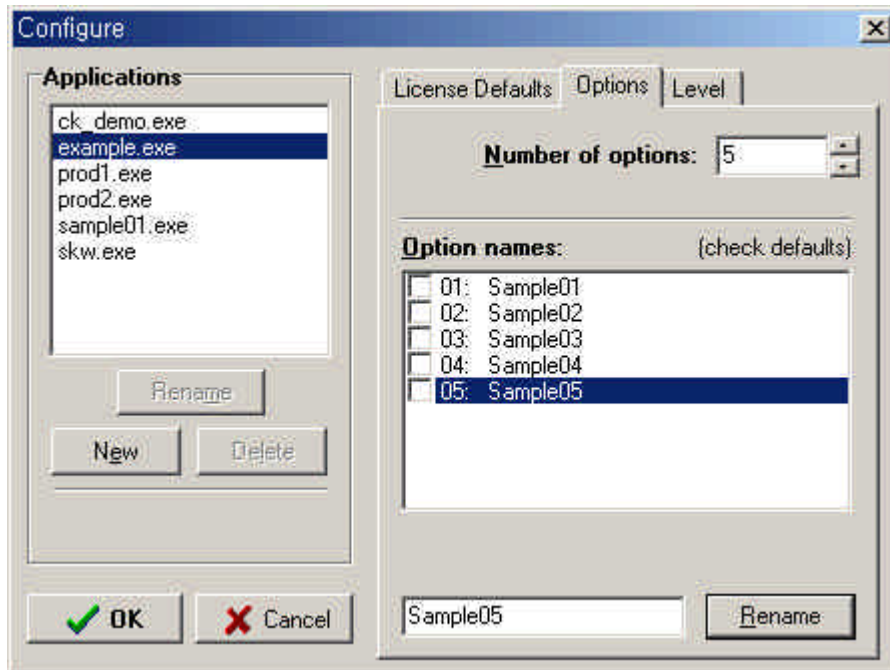
Sample01.exe

가

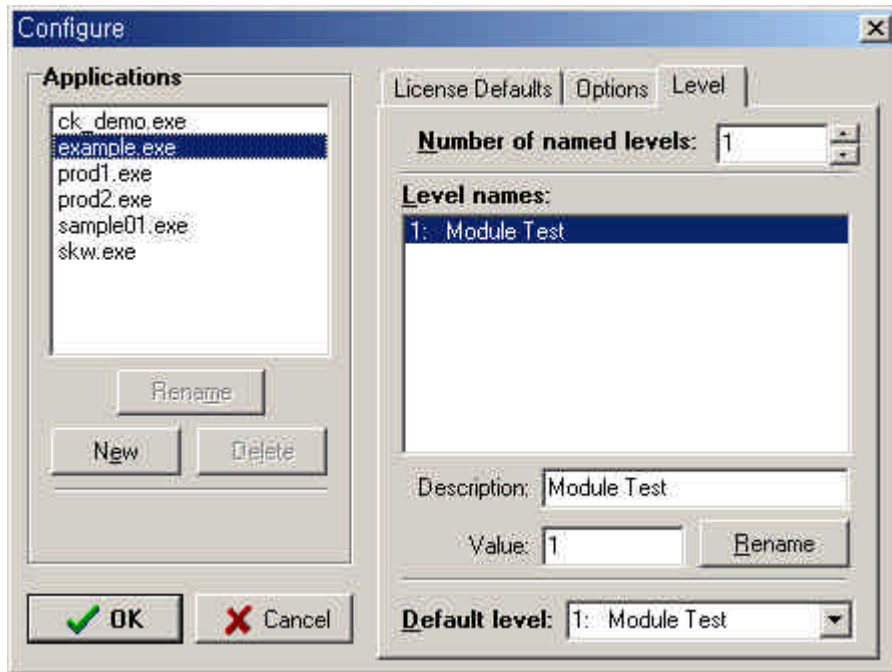


## Site Key Generator

Site Key Generator Configure  
Applications  
가 Filename example.exe  
Number of Options 5

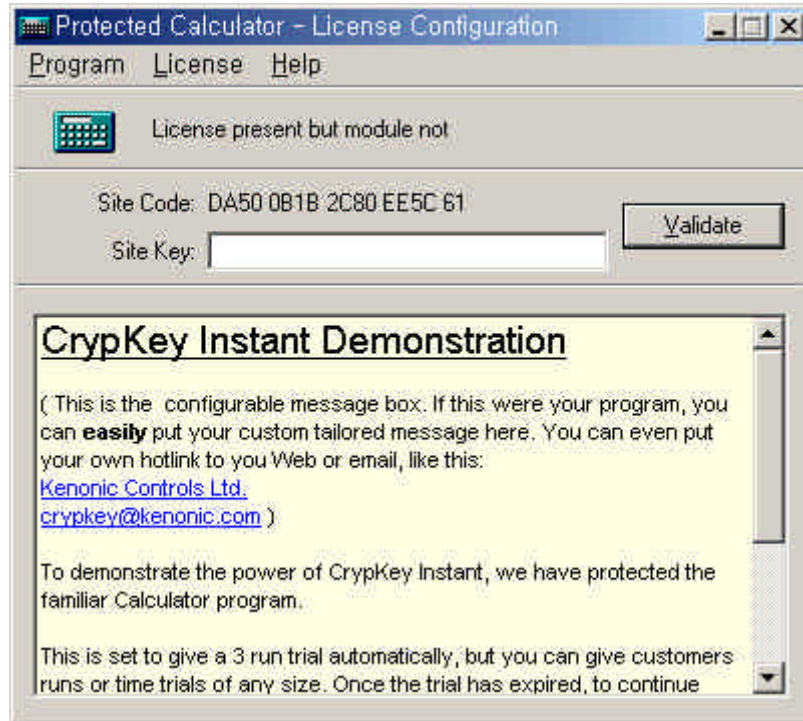


Configure Level ' . Number of named Levels  
 CrypKey 가  
 , 가 1 '  
 Description Module Test ' Value 1 '



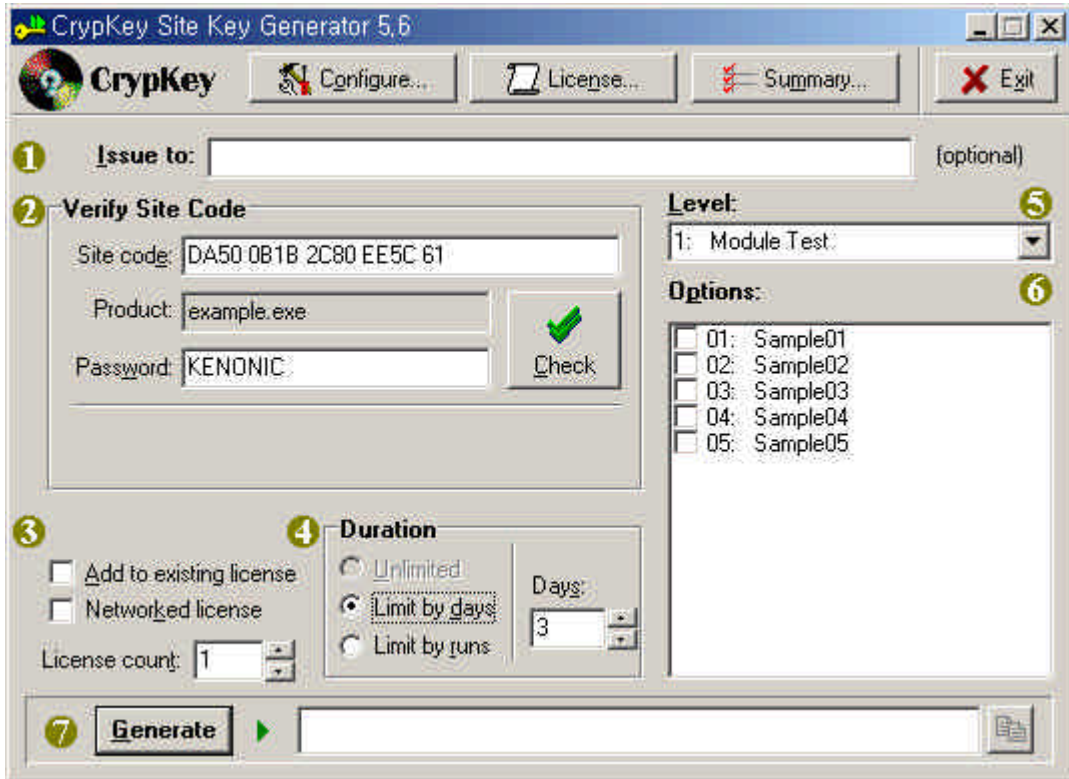
가 Crypkey 가

(sample01)



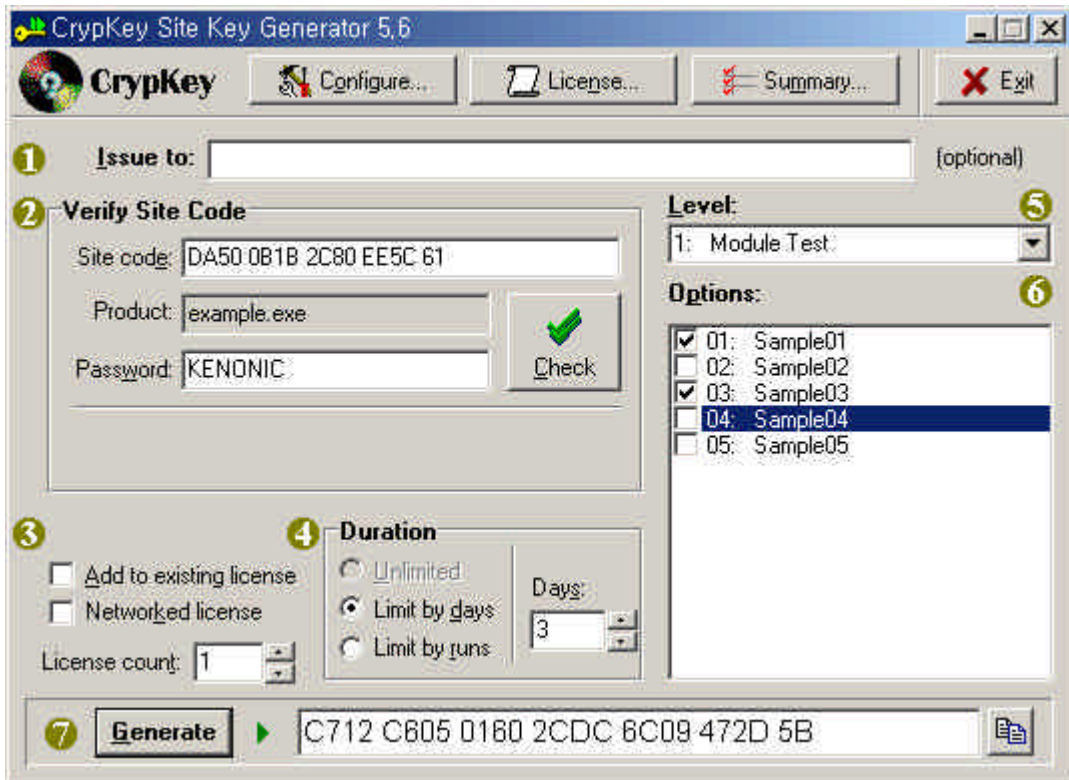
Site Code DA50 0B1B 2C80 EE5C 61 ' , Site Key  
Generator Site Code ' .

Site Code , 'Check'  
 . Level Options Configure



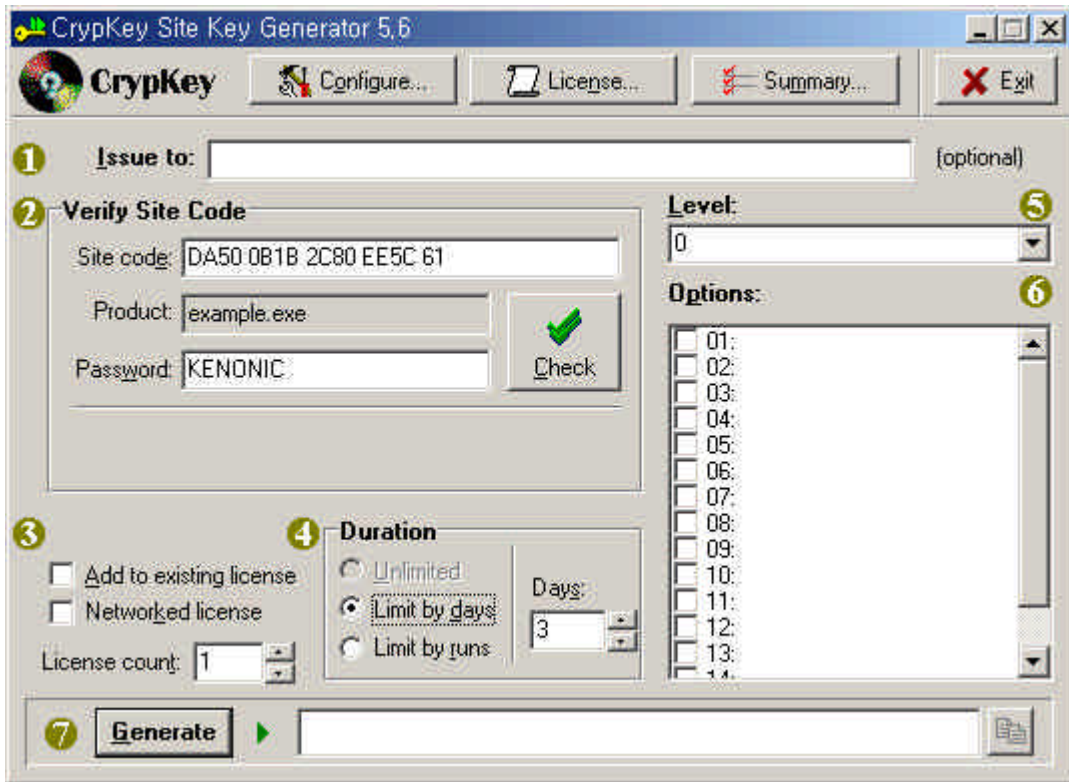
Options CrypKey Instant Module  
 . Option V ' Generate ,  
 가 .





Sample01, Sample02

## 5.4 SiteKey Generator



### SiteKey Generator

- Issue to



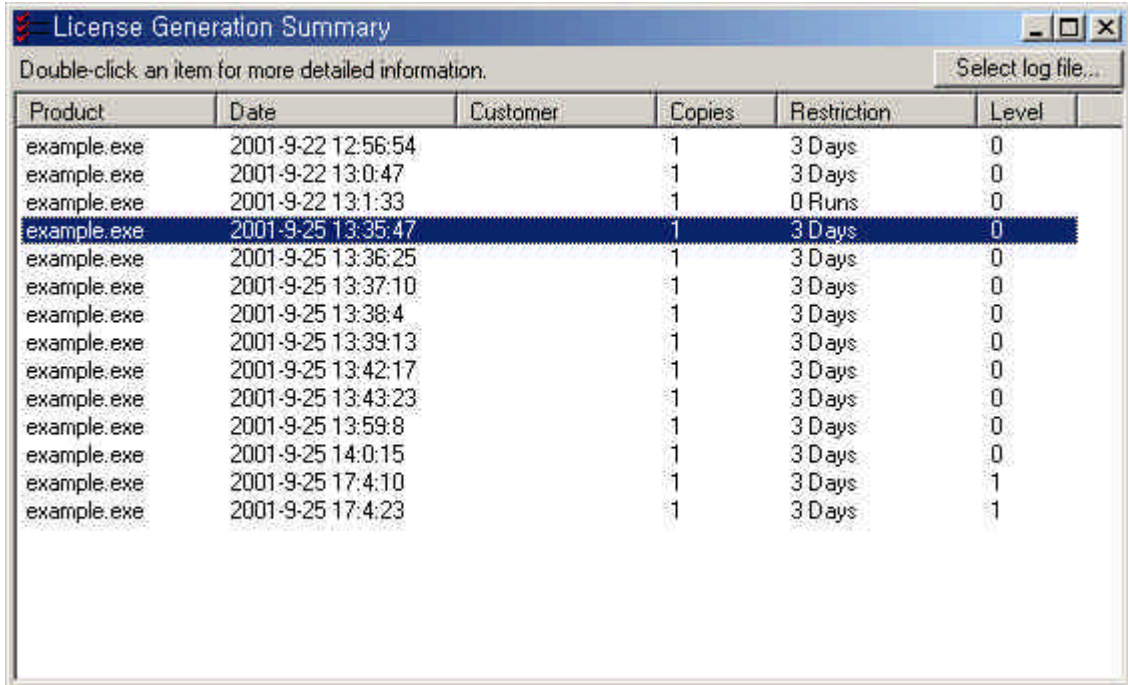
· Options  
Option 가 Configure ' .

· Generate  
Generate ' 1) ~ 6)  
Site Key 가 .  
Site Key ' (Emailing )  
(Exit) .

## 5.5 Summary

SiteKey Generator

Summary



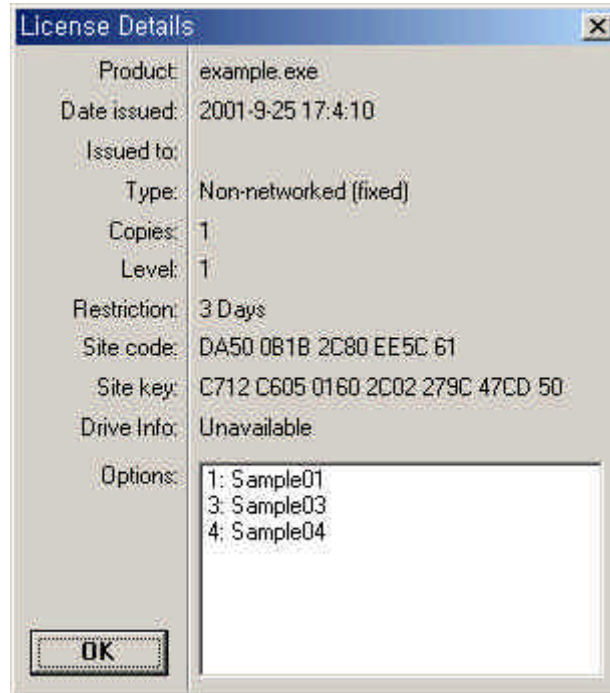
The screenshot shows a window titled "License Generation Summary" with a standard Windows interface. Below the title bar, there is a subtitle "Double-click an item for more detailed information." and a button labeled "Select log file...". The main content is a table with the following columns: Product, Date, Customer, Copies, Restriction, and Level. The table contains 13 rows of data, all with "example.exe" as the product and "1" as the number of copies. The restriction is "3 Days" for all entries, and the level is either "0" or "1". The fourth row is highlighted in blue.

Product	Date	Customer	Copies	Restriction	Level
example.exe	2001-9-22 12:56:54		1	3 Days	0
example.exe	2001-9-22 13:0:47		1	3 Days	0
example.exe	2001-9-22 13:1:33		1	0 Runs	0
example.exe	2001-9-25 13:35:47		1	3 Days	0
example.exe	2001-9-25 13:36:25		1	3 Days	0
example.exe	2001-9-25 13:37:10		1	3 Days	0
example.exe	2001-9-25 13:38:4		1	3 Days	0
example.exe	2001-9-25 13:39:13		1	3 Days	0
example.exe	2001-9-25 13:42:17		1	3 Days	0
example.exe	2001-9-25 13:43:23		1	3 Days	0
example.exe	2001-9-25 13:59:8		1	3 Days	0
example.exe	2001-9-25 14:0:15		1	3 Days	0
example.exe	2001-9-25 17:4:10		1	3 Days	1
example.exe	2001-9-25 17:4:23		1	3 Days	1

SiteKey Generator

, Product '

Double-Click



## 6. 가

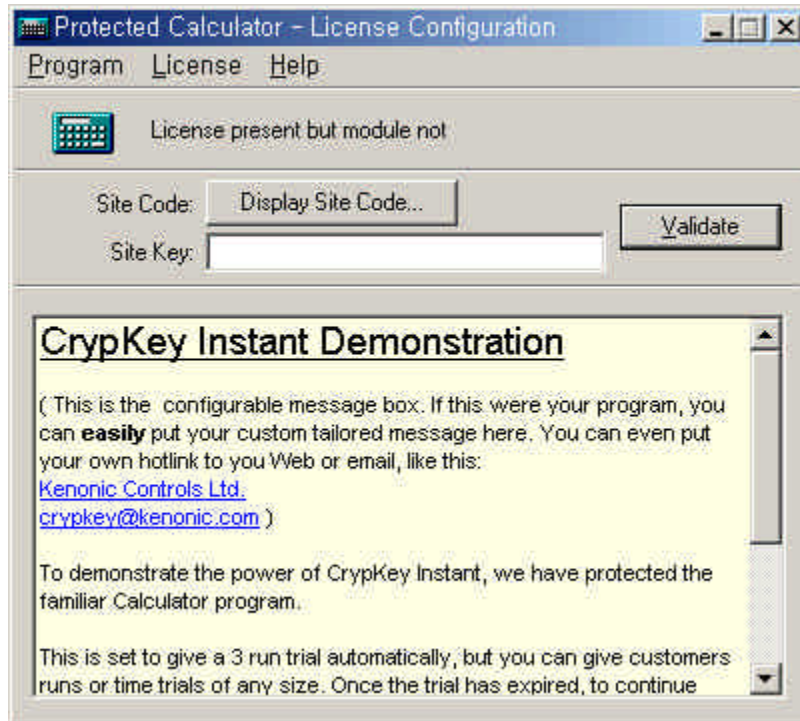
CrypKey Instant 가  
(example.exe)

### 6.1 Example.exe

Windows ' ' , CrypKey  
Instant VX.X.XXX ' 가 . Example.exe '  
Double Click . Example.exe  
CrypKey Instant Protection ,  
( )가 가

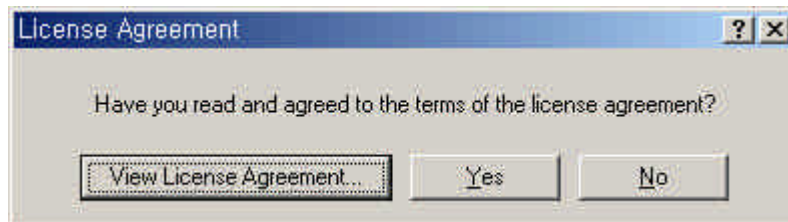
Enter '

License Configuration '



Display Site Code '

가

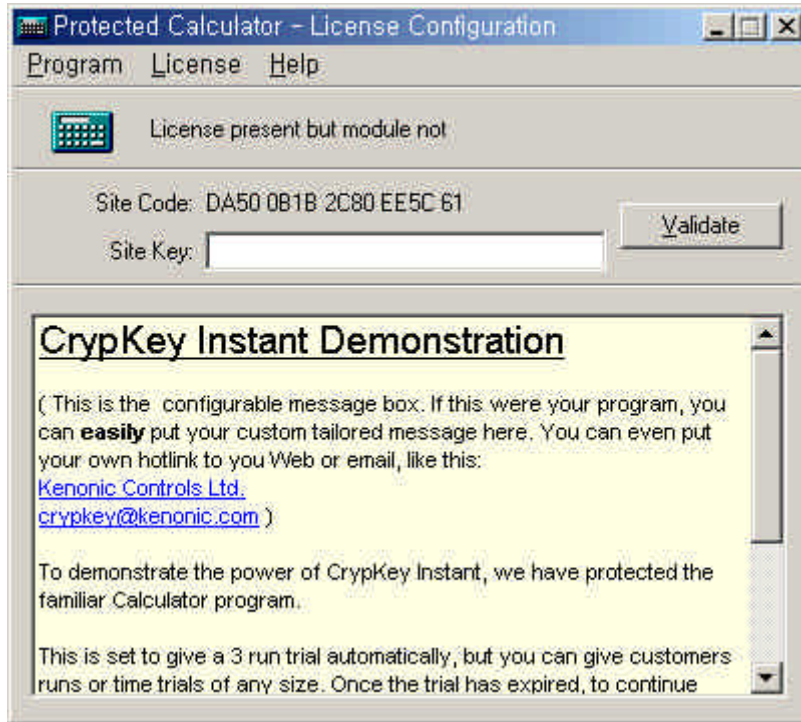




Site Code ' .

View Agreement ' .

Yes ' .



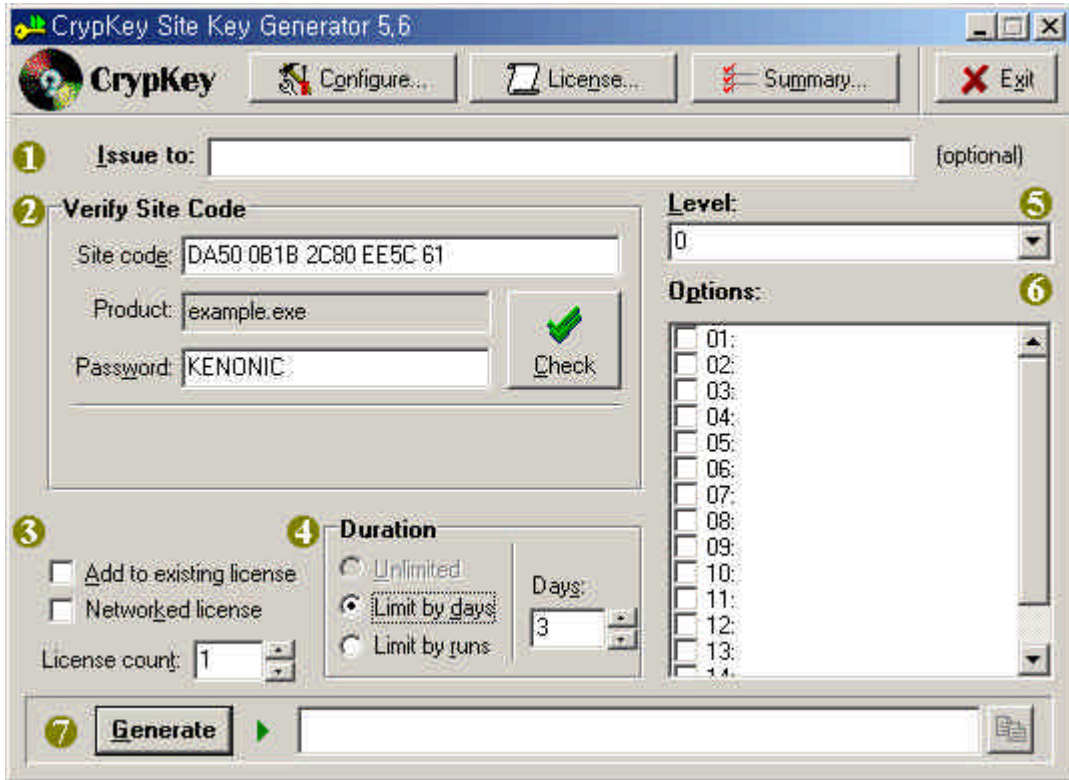
, Site Code ' .

( )  
.)

.( Site Code



Product ' Example.exe ; Password ' KENONIC ' .



Duration ' Days( 3 ) Runs( 3 )  
 ) ( , ) Generate ' Site Key ( )  
 . ,  
 .  
 ,  
 Configure ' example.exe ' .

6.3 ( )

6.1 License Configuration ' 가 Site Key ' )  
Site Key ( )  
' Validate ' , Site Code '  
, SiteKey Generator (Vendor)가

# 7.

CrypKey Instant

Floating)

NT PC

가

PC

PC

Concurrent(

가 SiteKey Generator

4

Floating

4

, 5

가

4

(

)

, 6

, 7

5

가

가

## 7.1

CrypKey Instant

- Instant CrypKey
- -
- 가
- WindowsNT, Windows95/98 Novell

Platform	
DOS	CKSERVE.EXE
Windows 3.1, 95/98	WCKSERVE.EXE
NT	NT Stealth
Novell	CKSERVER.NLM
OS2	OS2 Driver

## 7.2 DOS

CrypKey Instant가 CKSERVE.EXE ' DOS TSR , Command Line CKSERVE

- 1 (Command Line) CKSERVE.EXE C: \ APP1;C: \ UTIL \ APP2;E: \ WIN \ APP3;
- 2 (AUTOEXEC.BAT) SET CKSERVE = C: \ APP1;C: \ UTIL \ APP2;E: \ WIN \ APP3;

Reboot .

## 7.3 Windows 3.X Win95/98

CrypKey Instant가 WCKSERVE.EXE ' Windows , Command Line  
CKSERVE .

- 1 (Command Line) WCKSERVE.EXE C: \ APP1;C: \ UTIL \ APPW;E: \ WIN \ APP3;
- 2 (AUTOEXEC.BAT) SET CKSERVE = C: \ APP1;C: \ UTIL \ APP2;E: \ WIN \ APP3;

Reboot .

## 7.4 WindowsNT

NT , CrypKey Instant가  
SetupEx.EXE ' CKS.EXE ' . ,  
SetupEx.EXE /S C: \ CRYPTDEMO( ) (Silent Mode 가 )  
SetupEx.EXE C: \ CRYPTDEMO( ) (Verbose Mode 가  
) Reboot .  
Uninstall Cki.xxx '  
' \ NETDRIVE \ NTSTELTH ' HELP .

## 7.5 Novel

CrypKey Instant가 CKSERVER.NLM ' Netware 3.X 4.X  
, NetWare Monitor Mode '  
LOAD CKSERVER ' . , Reboot .

## 7.6 OS2

OS2 .



## 8.

CrypKey Protection . CrypKey Instant/SiteKey Generator , PC PC  
가

8.1 (CrypKey Instant )  
PC( ) ( )  
PC )  
License Configuration ' License ' PC Transfer To Directory '  
. , Select Destination Program ' .

8.2

(CrypKey Instant )

Source ) PC( , Target ) , PC( ,

1) Target

2) Target FDD License  
Configuration ' , License '  
Transfer In From Another Computer '  
( FDD ) ,  
Source FDD

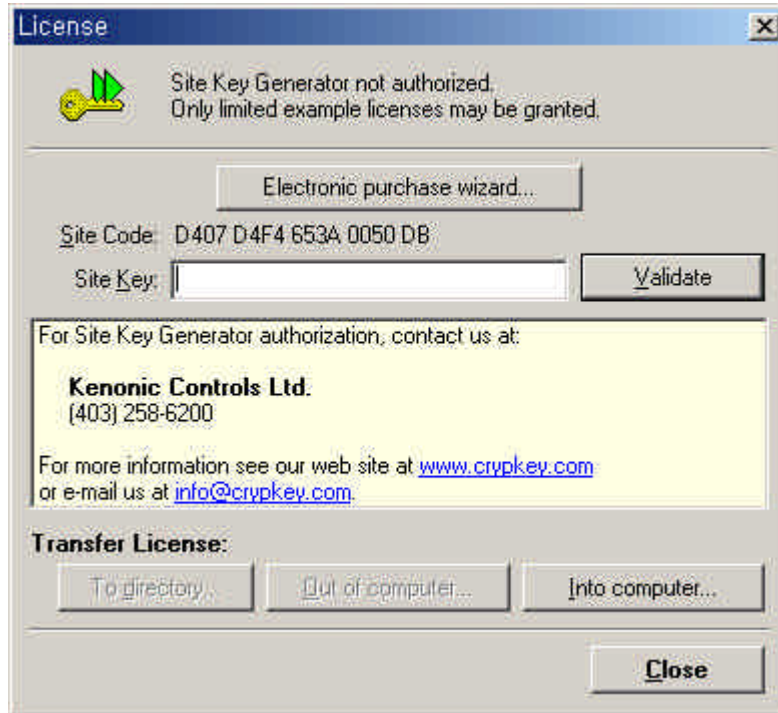
3) Source License ,  
License Configuration ' Enter '  
Transfer Out To Another Computer ' , License '  
( FDD ) ,  
Source  
1 ' 가 가

4) Source Target , Target Transfer  
Into Computer ' , Target 가

## 8.3 SiteKey Generator

SiteKey Generator

License



---

To Directory

8.1

- 
- 1) Target SiteKey Generator .
  - 2) Target FDD License ' .  
 Into Computer ' , Source FDD .
  - 3) Source License ' Out of  
 Computer ' , Source SiteKey Generator .  
 1 ' 가 .
  - 4) Source Target , Target Into  
 Computer ' .  
 SiteKey Generator Target . 가 .



SiteKey Generator .

# 9. Distributor Authorizing License

Distributor Authorizing License(DAL)

( , )  
가 ( , )  
/ / ) DAL  
.

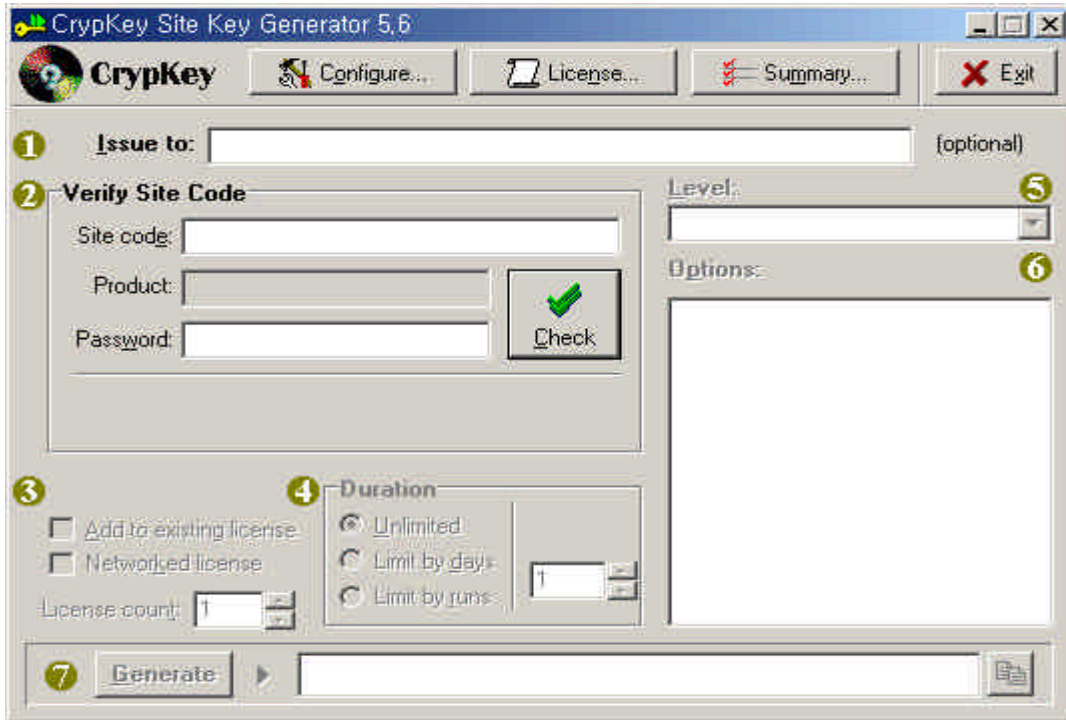
## 9.1

Protection

DAL

DAL

- 1) SiteKey Generator
- 2) SG(Slave) License '  
( 8.3 ' ) Site Code '  
Email
- 3) SG(Master)  
, Site Code '
- 4) Password ' MUNCHKIN '
- 5) Check ' , Product ' SKW.EXE 가



6) Duration ; License Count ' ( , Limit  
by Runs ' 1,000 ' , Slave  
SG 1,000 . 가 .), Options '

7) Generate ' Site Key '

8) Site Key

9) Site Key , 2) Site Key  
Validate '

## 9.2

- 1) 가 SiteKey Generator PC  
License ' PC ' , SG  
Code ' ( 8.3 ' ) Site
- 2) 2~3 , Site Key '
- 3) Site Key ' Validate '
- 4) DAL .

# 10. CrypKey STEALTH

CrypKey Stealth ( ) Hacker  
CrypKey Instant  
CrypKey SDK .  
CrypKey SDK 5.5 , CrypKey STEALTH  
'10.1 ~ 10.2'  
, CrypKey SDK 5.6 , CrypKey  
Instant 5.6 CrypKey STEALTH  
3.1 Select Files CrypKey Instant  
.

---

Stealth . ,

---

Stealth가 , Copy-Protection  
/Reverse Engineering 가 가 .  
Stealth가 ,  
, Stealth  
가  
( , , )



\_\_\_\_\_

,

가

\_\_\_\_\_가

, EXE DLL

가

10.1

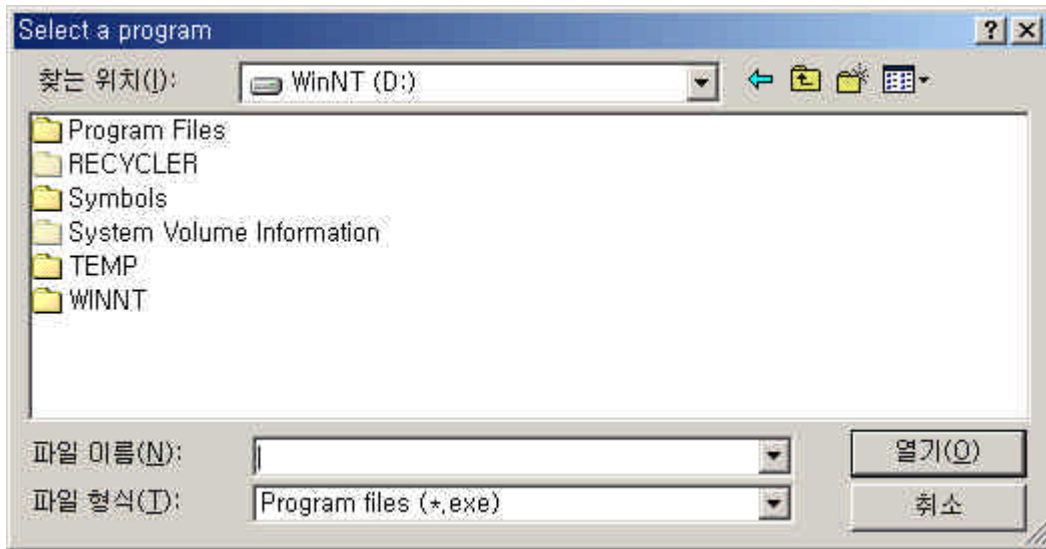
1) CrypKey Stealth

2) CrypKey Stealth ' License가  
License Configuration '

10.2 ' , License가



3) Pick File ' CrypKey Instant Protection  
/Open

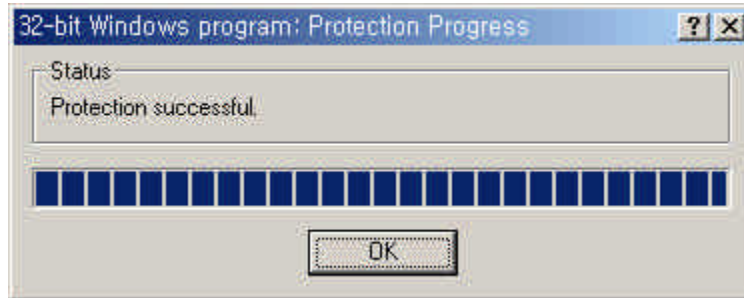


, Program to Compress '

가

4) 2 ' Begin Compression ' ,  
Compression

'bak ' .



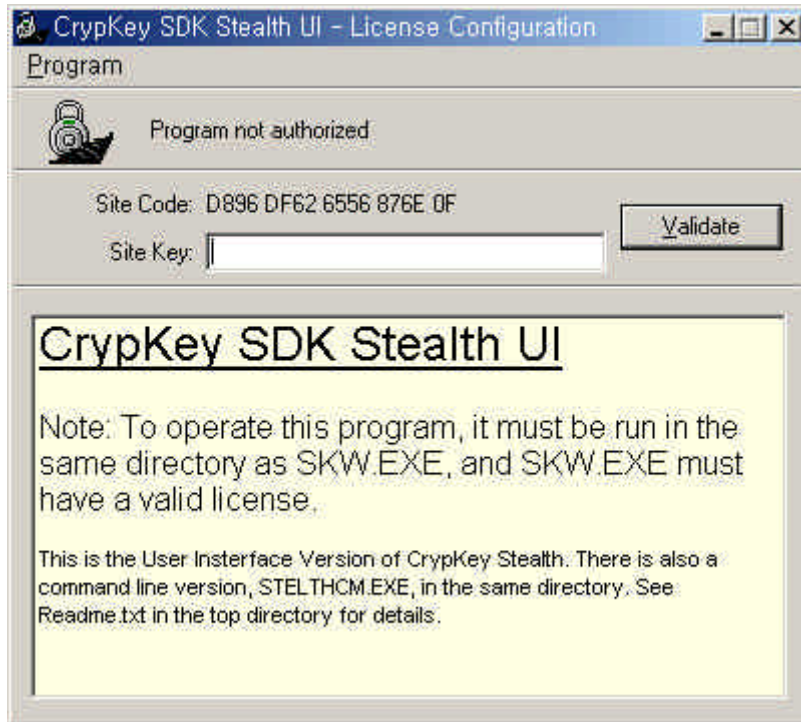
5) Compression

OK ' .

가 .

## 10.2 Stealth ( )

1) Stealth 가 , CrypKey Stealth ’



2) Site Code ' Email 30 가 ( 가 )  
가 ( ) Site Key ' .

2) Site Key ' Site Key  
Validate ' . 10.1

# 11.

## 11.1

### 1) WindowsNT

Windows NT

WinNT WinNT/ System32

Error.log ' Errord.log '

### 2) NetWare

i) CKSERVE is not serving this directory '

- CKSERVER.NLM '
- Autoexec.ncf ' CKSERVER.NLM '
- 
- 가

ii) NLM

, Novell clib.nlm '

Undefined Symbol :\_ck ' 가

- Novell patch libup5.exe ' patch
- diredtfs.nlm '
- clib.nlms 가 Shut down Restart

11.2 Norton

Speed Disk

HDD

.

Speed Disk

\*.ENT, \*.RST, .KEY .41S

,

( )

.

.

# 12.

## 12.1 CrypKey Instant 가?

		CrypKey
.	PC PC 가 .	Email 가 , PC
	.	.
,	,	Email , 가

		CrypKey
	. 가 , .	. 가 . 가 가 .
. 가	. 가 .	. 가 Email .
	( , , Follow-Up ) , 가 .	, Email , CrypKey Instant 가 가 .
.	가 .	.



12.2 CrypKey가 ?

HDD  
ID 가

12.3 / 가?

가

12.4 가?

, Product 1 ( XXX.exe) product  
1.dat ' .

12.5 Windows ?

HDD Windows 가 ,  
가

12.6 Clock 가?

, 가 Clock  
CrypKey  
, Clock Reboot

## 12.7 CD-ROM

가 가 가?

CD-ROM

CD-ROM

3.2 CrypKey

## 12.8

가?

CrypKey  
Options '

32

, CrypKey Instant

( )

.( ,

InitCrypKey 0 '

Call

Master Key

User Key

# A

CrypKey 가?

CrypKey Copy-Protection Software License Control 가 S/W Tool-Kit , IBM, Motorola, Panasonic, Kodak, Minolta, GE, SEGA, Hewlett Packard, Sybase, Caterpillar 7,000 Site S/W Microsoft MSDN(Microsoft Developer Network)

- Hardware Key Disk Key , , ,
- PC H/W .
- 가 , , 가 30 가 , , 가
- Internet CD-ROM
- 
- 30
- DOS, DOS 32 Bit, Win 3.X, Win32, Win95, Win98, WinNT, OS/2, Novell & Microsoft Network

- CrypKey S/W Licensing 가
- 30 CrypKey .
- CrypKey Network ( S/W가 Server Network Clients ) .
  - Network 가
  - Network 가
  - S/W Network License PC가 .
  - Network License , S/W 가 가 .
  - Network License( ) 가



- CrypKey    Microsoft, Sega, Sybase    S/W Vendor  
 Key    Hardware Key    Disk  
 Vendor    가    U\$50,000    CrypKey    CAD    S/W  
           7,000 Site    S/W

2) Network    CrypKey ?  
 CrypKey    Server    Protected Program(    + CrypKey)  
           Network    Client    Network Driver  
                           Client  
                           가

3)    가    PC    Protected Program    가?  
 Floppy Disk Transfer    Network    Direct Transfer  
 PC    PC    가

4)    PC    가?  
 CrypKey    Hardware  
 가    Protected Program    PC  
           Random Coding Marker    Site Code  
                           (    PC    Site Code  
           Site Key    )    PC

5) CrypKey Protected Program (License Vendor가 CrypKey 가?  
CrypKey , 가  
Password

6) License Kill Site Key 가?

7) , 30 가 Demo Version 가?  
60 가

8) CrypKey , , Site Code/Key, 가?

9) CrypKey Hard Drive Serial Number 가?  
CrypKey , Unique State Dependence ' ,  
Protected Program Hard Drive  
H/W Hard Drive 가 가  
Hard Drive 가

10) CrypKey Hacker

가?

CrypKey Instant

CrypKey Instant 가

- Random Encryption :

Protected Program

가

CrypKey '

Hacker

CrypKey

CrypKey

Protected Program

- Math Challenge :

CrypKey Security Function Binary Code가 0 ' Error

Number Return , Complex Randomized Calculation '

가 Return

Hacker

Calculation

- Encryption and Cyclic Redundancy Checks(CRC) :

CRC

CrypKey SDK

Software Developer Kit(SDK) API

가

Instant가

AntiHacking Techniques '



11) CrypKey SDK CrypKey INSTANT . 가?

CrypKey INSTANT

- 30 Recompile EXE ' Protection  
EXE ' DLL ' .
- Protected EXE/DLL .
- CrypKey Library Call Write 가  
Source Code Access 가 .
- 10 .

CrypKey SDK

- CrypKey DLL .
- CrypKey Instant .
- 가 ,  
3 ~ 15 .

12) Protected Program  
 PC ( , Hard-Drive , Windows )  
 Site Key :  
 (Hard-Drive , )  
 Site Key . Site 가

13) CrypKey Protection US Export Restrictions 가?  
 US Resctrictions 時 Data Encoding Level  
 CrypWrap 가 .

14) CrypKey UpGrade 가 ?  
 Old Ver. New Ver.  
 .

15) CrypKey Mac UNIX 가?  
 UNIX Mac Simulated Windows CrypKey가  
 .

16) Site Code /Site Key  
 가?  
 가 ,  
 CASPER 가 ( )  
 ) .



# B

## 1. CrypKey Instant

**CrypKey Instant 5.6 5.7**

---

### CrypKey Protection

( )

- ( ) 가 .
- , , ( )
- 10000 .
- 가 (WAN )
- CrypKey .
- ( , ) .
- RRT 100 127 가 .
- 20GB .
- Novell 가 .

CrypKey Instant      5.3      5.6      .

- .EXE      CrypKey      가  
• .EXE      CrypKey DLL      NT  
가.
- , .

CrypKey      CrypKey Stealth      가

- Windows ME .
- -      (.EXE)      Stealthing '      ,  
가 .      가  
-      가      ,  
가
- Patching '      .  
-      ,      Patch  
   , Stealth      Patch
- -      Input, Output      가
- Stealth      .EXE      가      Runtime .

CD Copy

- CD Copy 가 가 .
- CD Copy 가 .
- 가.
- CrypKey 5.6 .CKN .
- .CKN ,
- 가 .
- VB COM DLL .
- FoxPro .
- DOS .
- '100' .
- SKW EasyKicense .
- Windows ME Win2000 CD Protection .
- Windows ME WCKSERVE.EXE 가 .
- CASPER.DLL .
- Extra Security(Hacker Key Generator) 가.
- Cki32g cki16g cki32h cki16h .
- Non-Code .
- Stealth .
- 'Run Maximized "

- Config Dialog      Splash Screen
- Clock Tampering      가
- CrypKey lib      가
- NT Driver Extraction Timeout
- NT      가
- Ready - to - try '      .(Network
- DLL      , DLL      ,
- Lock '      .
- 200      RTT      .
- ,
- CrypWrap      .

CrypKey Instant 5.0 5.3 .

CrypKey File  
CrypKey

- / NT ,
- Update , .
- CrypKey , 가
- DLL ) / , CrypKey (
- NT 가 .
- NT , NT .
- 가 , Common File Directory Subdirectory
- 가 , .
- CD-ROM HDD  
Write , CD-ROM



- , , .

CrypWarp 가  
 CrypWarp  
 Instant , CrypKey .

- ( , Site Key )

- ,  
 - .

- Web Update ,

CD Key Protection 가 ( )  
 CrypKey CD Key  
 가

- CrypKey , CD CD  
 가 , CD 가,  
 , CrypKey

- CrypKey CD가 , CD가 CrypKey 가
- 가 ( , Windows , HDD Reformatting/ ),
- 가 . PC PC Transfer , CrypKey CD

CrypKey Instant 4.3 5.0

---

EXE ' DLL ' Protection .  
 , CrypKey Instant Interface ' , .

가 가 . DLL  
 Option ' ,  
 ( , On/Off) . ,

CrypWrap ' , CrypKey Instant  
 가 CrypWrap ' ,  
 Encryption Wrapper ' .  
 , ( ) .  
 , 가 .

CrypKey STEALTH ' ( Reverse Engineering) 가 , 가  
10 ' .

32 Bit SiteKey Generator  
Configuration ( , , ) . GUI ,  
INI ' .

CASPER ' , ( )  
, CrypKey Instant/SDK .

- NTStealth NT
- 
- 가
  - CrypKey
  - ( , )
  - NT driver
    - SETUPEX.EXE & CKS.EXE
  - Win9X
    - WCKSERVE.EXE
- Stealth , .EXE
  - CrypKey
- Extra Check
- Novell
- Lcrypsy7.lib
- crp32dll.dll

CrypKey SDK 5.5 5.6 .

---

- DLL CRC
- 가 Errorcode 가  
- CRC  
- Crypkey.h InitCrypKey()
  - DLL 가

CrypKey (.ckn) 가.  
가  
CrypKey 가

- CrypKey 가.
- AcquireLicense() .  
CrypKey  
(DirectTransfer() ) 가
  - 가
  - CrypKey

- FloatingLicenseSnapshot()  
Network 가

CrypKey CrypKey Stealth 가

- Windows ME

- - 가 (.EXE) Stealthing ' 가
  - 가 , 가

- Patching '
  - , Patch , Stealth Patch

- - Input, Output 가

- , Stealth 가
  - 1) User Interface Stealth(Stelthui.exe)  
Input Output 가

## 2) Command Line Stealth(Stelthcm.exe)

가

Stealth

가

,

Stealth

Input

Output

Commandline Parameter

.

- , 가

.

- Disk Size 500MB

- Windows ME
- SiteKeys Extra Security 가.
- CRP32DLL.DLL 가.  
 '14 CRP32DLL.DLL '
- InitCrypKey() ErrorCode 가.
- 32 Bit CKChallenge32() 가.
- Ready to Try ' Windows 98 20 '
- NT Clock Setback Check 가  
 '21(false) '
- CRYPSEV.EXE가
- SETUP\_CK.DLL
- NT
- 가 Extra CRC Security 가.
- Password 가
- NT 가 NT



VC VB CrypKey COM Object가 COM-Object

NT

- Transfer 가
- NT Cold Reboot , 가 가
- SKW DAL(Distributor Authorizing License)
- SKW Level
- Novell NLM
  
- 
- Stealth : , Hacking  
(SiteKey Generator, 32 Bit DLL, CRP 32 DLL
  
- Thunk DLL CRC )
- 16 Bit Thunk DLL : Random Named File
  
- Thunk DLL : 가 DLL
  
- 
- NT 가 : / ,  
RTT

- Thunk DLL ,  
CrypKey ,
- , Thunk DLL 가  
가 가
- DLL ,
- , NT
- Restriction Fiie CRC  
NT .
- NT ,
- 400% 가
- NT Update , Tamper  
Detection ' 가
- NT Setup Uninstall 가
- SiteKey Generator
  - .
  - 
  - INI , Configuration 가
  - CrypKey (Password )
  - 16/32 Bit, C, Visual Basic, Access, Delphi Sample Source Code

## CrypKey SDK 5.2

- Microsoft C++ 6.0, 6.0 8.0
- Microsoft Visual C++ 1.5, 2.X, 4.X, 5.X 6.X
- Borland C++ 4.X
- Borland C/C++ 3.X
- MS - DOS External Linking , 16 32 Bit Windows DLL  
:
- Microsoft Visual Basic, Microsoft FoxPro, Microsoft Access, CA Clipper, Borland Delphi, Borland Visual dBASE, Borland Paradox Powersoft PowerBuilder
- 16/32 Bit, C, Visual Basic, Access, Delphi 가  
Sample Code

